

9. SPECIAL

Contents

9. SPECIAL	81
CONTENTS	81
9.1 BACKGROUND COLOUR	82
9.2 PRINT	83
9.3 PROGRAM PARAMETERS	83
9.3.1 APPLICATION TAB.....	83
9.3.2 IMAGE TAB	84
9.4 TABLE OF REQUIREMENTS	84
9.5 PASSWORD CHANGE	85
9.6 USER LOGOUT	85
9.7 LOGIN BY OTHER USERS	86
9.8 SIMULATION OF NETWORK CONNECTION	86
9.9 SIMULATION OF ESTIMATION	87
9.10 NOTEBOOKS	87
9.11 SERVICE OF THE SHIELD	88
9.12 ADMINISTRATOR FUNCTIONS	89
9.12.1 SCREEN MASK FOR THE MAIN DIARY	89
9.12.2 GROUPS OF DATABASES	90
9.12.3 HORN MASK	90
9.13 END	91
9.14 SENDING SMS AND E-MAILS	92
9.15 REQUIREMENTS FOR ACTIVITIES	93
9.15.1 TYPING REQUIREMENTS	95
9.15.2 VERIFICATION OF REQUIREMENT	96
9.15.3 TAKING THE REQUIREMENT.....	97
9.15.4 EXECUTION OF REQUIRED EDITING	97
9.15.5 APPROVAL OF REQUIREMENT BY THE USER	98
9.16 DISPLAY DIAGRAMS GIS – TIS	98

This function has the options: “Colour of image background”, “Print”, “Program parameters”, “Table of requirements”, “Password change”, “User logout”, “Login other user”, “Simulation of network connection”, “Simulation of estimation”, “Notebooks”, “Service of shield”, “Function of administrator”, “Acknowledgement”, “Service windows”, and “End”.

Barva pozadí obrázků	
Tisk	F9
Parametry programu	Ctrl+F12
Tabulka požadavků	
Změna hesla	
Odhlášení uživatele	
Přihlášení jiného uživatele	
Simulace zapojení sítě	
Simulace estimace	
Zápisníky	
Obsluha štítu	▶
Funkce správce	▶
Kvitace	F11
Servisní okna	▶
Konec	Alt+X

Fig. 1 Pull down “Special” menu

The following chapters with the same name will describe the individual items in this pull down menu.

9.1 Background colour

After selection of the function *Background colour* the window is displayed in which the colour of the dotted frame in the background is used. It is changed by clicking with the mouse directly on the requested new background colour (it is framed with dots). Selection is confirmed by clicking with the mouse on the “OK” icon.



Fig. 2 Window Colour options

This will change the colour of the background in all the already opened windows and, at the same time, is the default for the newly opened windows: It is also possible to select the colour from the palette of

colours after clicking on the icon "Define own colours >>" and then to adding it into the "Own colours" section of the menu window.

9.2 Print

Printing is defined as the printing of the actual content of the window, if the actual window is the tab window, then it is the printing of its actual tab. The "Print" option is inactive (grey font colour), if no window is opened with printable content.

After selection of the item *Print* or pressing the button <F9> the dialogue window for the detailed setting of the printing is displayed. The form of this dialogue window is stated by the printing function (image, sheet, sample, diary...) and is contained in the respective chapters of this user description of the control system.

9.3 Program parameters

After selection of the function *Program, parameters* or pressing the key <Ctrl F12> the dialogue window with two tabs is displayed in which it is possible to modify the parameters. Switching between tabs is performed by clicking with the mouse on the name of the item.

9.3.1 Application tab

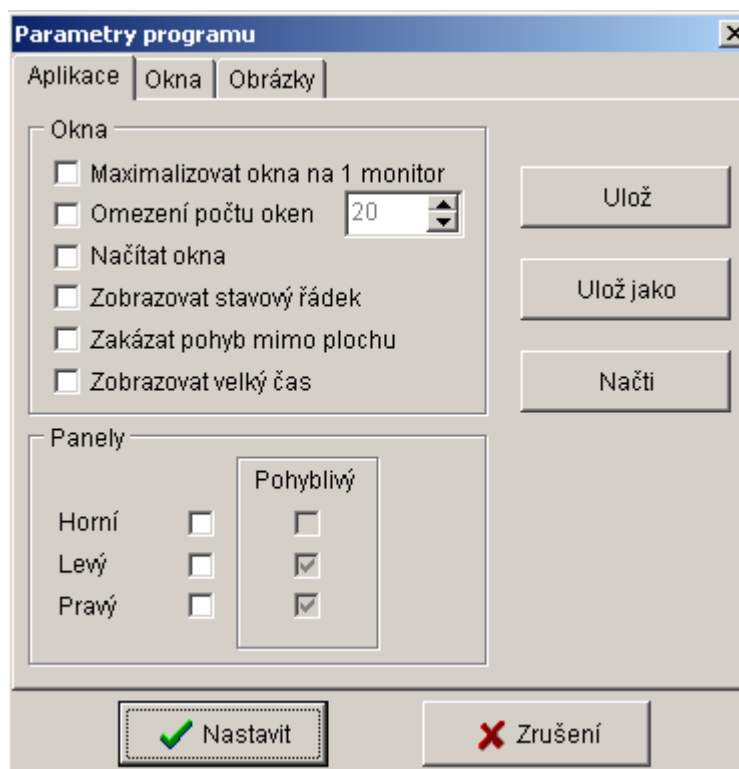


Fig. 3 Window of parameters of the program and the "Application" tab.

By checking, i.e. clicking with the mouse on the respective fields at the tab item "Application" the respective item is activated. The meaning of the items is as follows:

- **Monitor window for 1 monitor** – this option is not yet in use – it is non-functional.
- **Restriction of the number of windows** - checking this item serves for the restriction of the number of opened windows whose number is set by clicking with the mouse on icons increasing or decreasing the arrows in the neighbouring window.

- **Loading window** – checking of this item serves for the fact that when starting the application the saved data for the actual user is loaded (the user stated at login). These windows are saved in the second window tab “Program parameters!”.
- **Display status line** – checking serves for displaying the traditional status line of Windows at the lower edge of the application.

The “Panels” section serves for setting the area which can only be overlapped by the upper window. For each mouse click on the check field (upper, left, right) it is possible to state whether this panel will be movable or not by checking the neighbouring field. Checking the size of the panel after its display will be performed by moving the mouse to the panel edge. As soon as the cursor approaches the edge of the panel, it is changed to the so-called “two-direction arrow” – it is the time for pressing and holding the left mouse button and the movement of the mouse to the left or right. This will change the contour of the panel and by releasing the mouse button the panel is restored in a new appearance.

The set parameters are valid after clicking on the “Set” button and then the window of the program parameters is closed. If the parameters are to be loaded for this user when running the application, before clicking on the “Set” button, it is necessary to click with the mouse on the “Save” icon and the message will be displayed. *Do you want to save the configuration as the users “user name“?* which is confirmed by clicking on the “Yes” icon. For users with the respective authority (administrator) there are two more icons, “Save as” and “Read” which are inactive for the other users. These two icons are used for the administrator for possible modification of the program parameters of each user.

9.3.2 Image tab

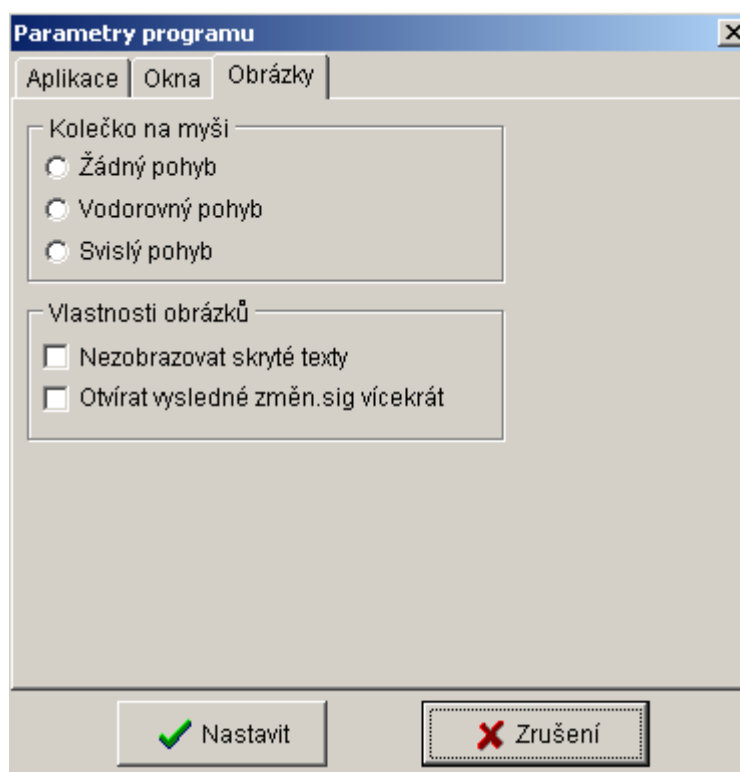


Fig. 4 Parameter window tab Images tab

This tab serves for setting the level of comfort for working with images. Setting the properties of the wheel mouse and images.

9.4 Table of requirements

The new functionality serves for typing the requirements for the modifications of diagrams, samples, sheets and other activities related to the MDISP system. Using the system it is possible to check the status of the processing of requirements, to approve and archive the confirmed changes.

9.5 Password change

This function enables to change the password of the actual logged in user. First of all, it is necessary to type the original password of the user, consequently the new password to be used to identify the user. It is necessary to type the password into the last field for checking. Press the “Confirm” button to change the password (only in the case that the newly typed password is identical with the checked password). Press the “Cancel” button to close the dialogue (the original password remains valid).

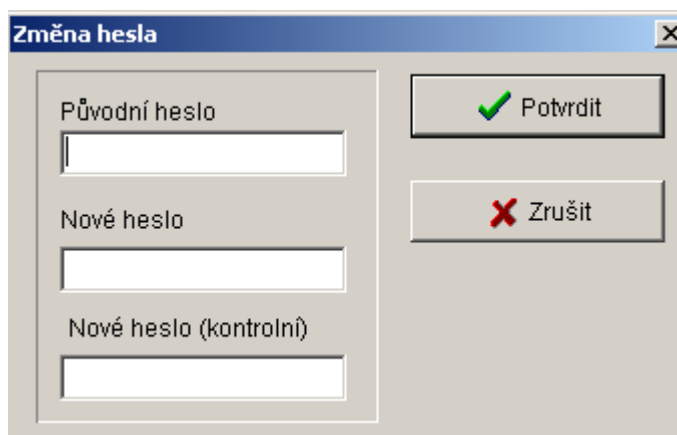


Fig. 5 Window for changing password

9.6 User logout

Select this item and confirm with the “Yes” button to logout the actual logged-in user.

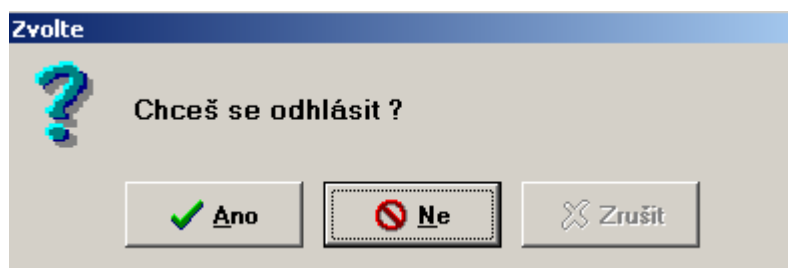


Fig. 6 Window for user logout

9.7 Login by other users

Select this item to change the actual logged-in user in the system. First of all there is the calling up of the dialogue for logging out the user (see point 9.6), after confirmation using the standard login dialogue, login the new user.

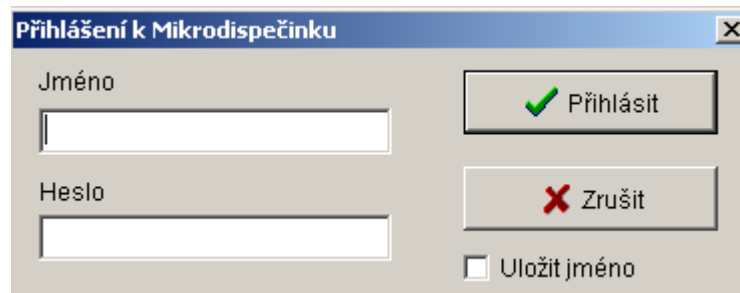


Fig. 7 Window for logging in a new user

9.8 Simulation of network connection

This function is mainly designed to support the preparation of the operation. It enables to simulate in the intended manipulations. In all phases of the simulation regime it is possible to call up the calculation of the topology for the modelled status of the network.

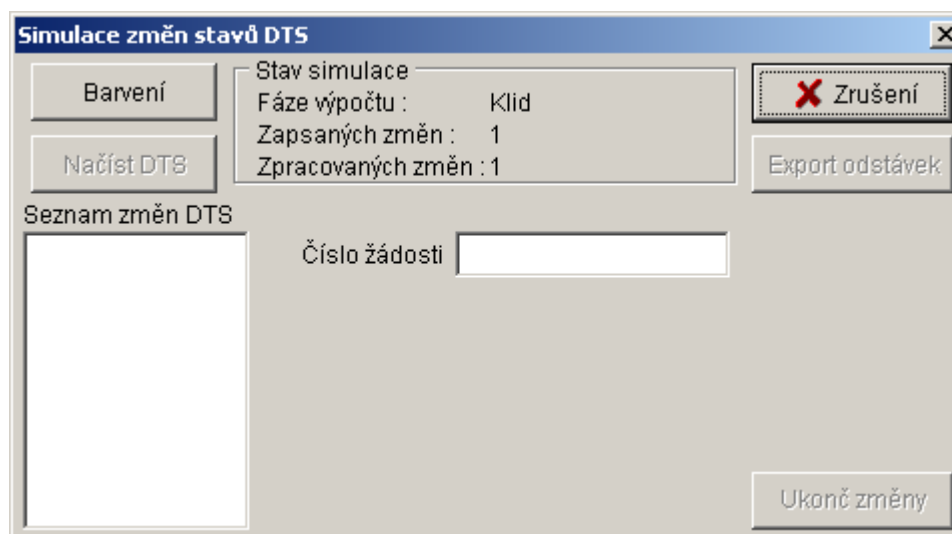


Fig. No. 8. Simulation window

It is possible to display the result of simulation directly in diagrams which are coloured according to defined sources; parts of the network are uniquely identified. Moreover, it is possible to create the list of devices which was put into the voltage free status through this simulated manipulation. This list can be exported in the TIS system into the selected “Request to shut down”.

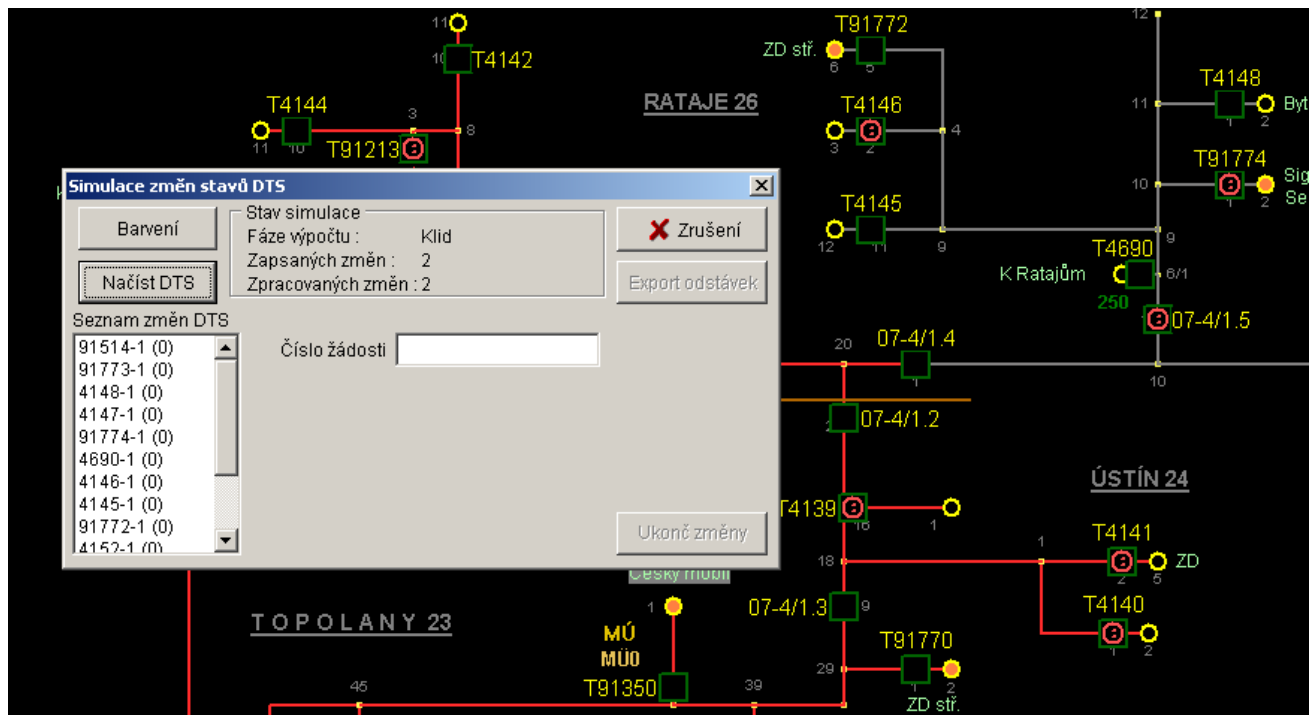


Fig. 8 Network after performed simulation with loaded DTS in voltage-free status

9.9 Simulation of estimation

This function serves to estimate VN, detailed information is in Chapter No.12.

9.10 Notebooks

Select the item *Notebooks* to display the window with the list of notebooks. The notebook is opened by clicking with the mouse on the respective name of the notebook and then clicking on the “Selection” icon. The same effect can be achieved by double clicking with the left mouse button on the name of the notebook.

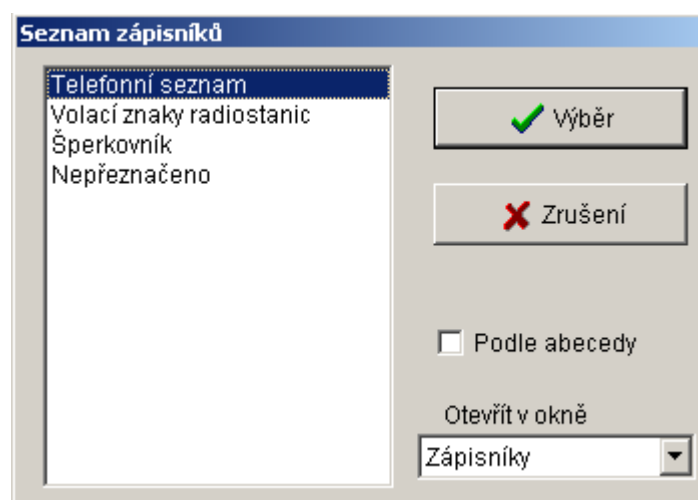


Fig. 9 Window for selection of the notebook

The number of notebooks is not practically restricted; creation of a new notebook for the required name or renaming an already used name for the existing notebook must only be performed by the administrator. The notebook is in fact a text editor for MD users. These notebooks are standard. The user

has the right to change parts in the notebook which can be edited. It is possible to change written texts anytime. The same rules are valid for editing of the text as for comments to the mark or diary.

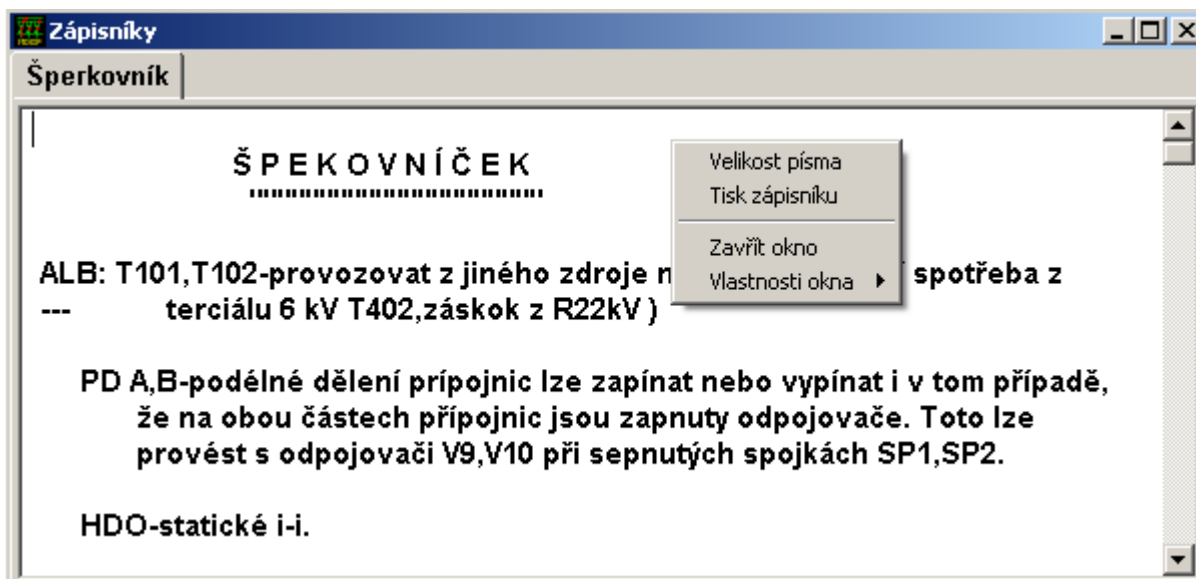


Fig. 10 Notebook and function menu

In the selected notebook, by clicking with the right mouse button, it is possible to display the functions menu and by clicking on the respective items it is possible to change the size of the font in firmly stated steps or to print the content of the list or change the properties of the window.

9.11 Service of the shield

This function is accessible only in ČEZ Ostrava in the Czech Republic.

The service of the shield includes a further five functions: “Restoration of the shield“, “Switching-off the shield“, “Switching on the shield“, “Increase of brightness“, “Decrease of brightness“.

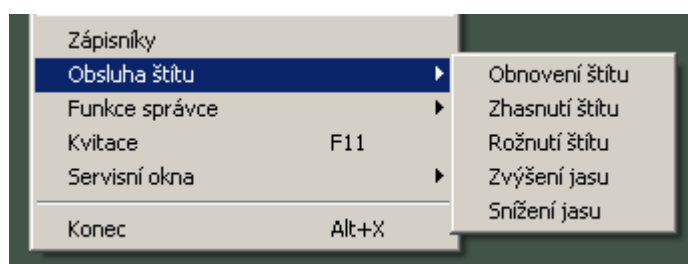


Fig. 11 Sub-menu for the “Service of the shield” function

- **Refresh of the shield** – used for setting the actual status on the dispatching board after failure during the display.
- **Switch off the shield** – disconnects all elements of the shield.
- **Switch on the shield** – activates all elements of the shield.
- **Increase brightness** – increases the elements of the shield.
- **Decrease brightness** – decreases the elements of the shield.

9.12 Administrator functions

This function has options which are only enabled for the user with the respective authority.

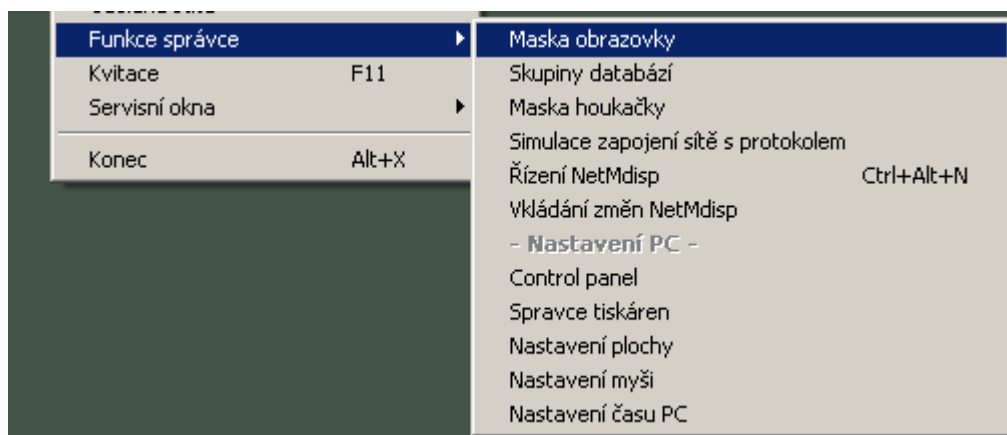


Fig. 12 Sub-menu for the “Administrator functions”

9.12.1 Screen mask for the main diary

The Screen mask enables the user with the respective authority (system administrator) to filter the list of items in the main diary. Movement in the window is enabled by the mouse, by the clicking on the respective selected field the column mask is cancelled or enabled. Selected items are marked in the menu by checking the respective field. At the same time it is possible to select any items from the back of the diary. For faster selection of all items it is possible to use the icon “Select all” or, on the contrary for removing selection of all items, the icon “Unselect all”. Selected items are reflected according to the setting by recording into the window of the main diary. This mask sets the PC beeping.

By clicking on the “Set” icon this setting is permanent and is also valid after termination of the program. After typing the mask there is the automatic modification of the masks for the main diaries open on all running computers.

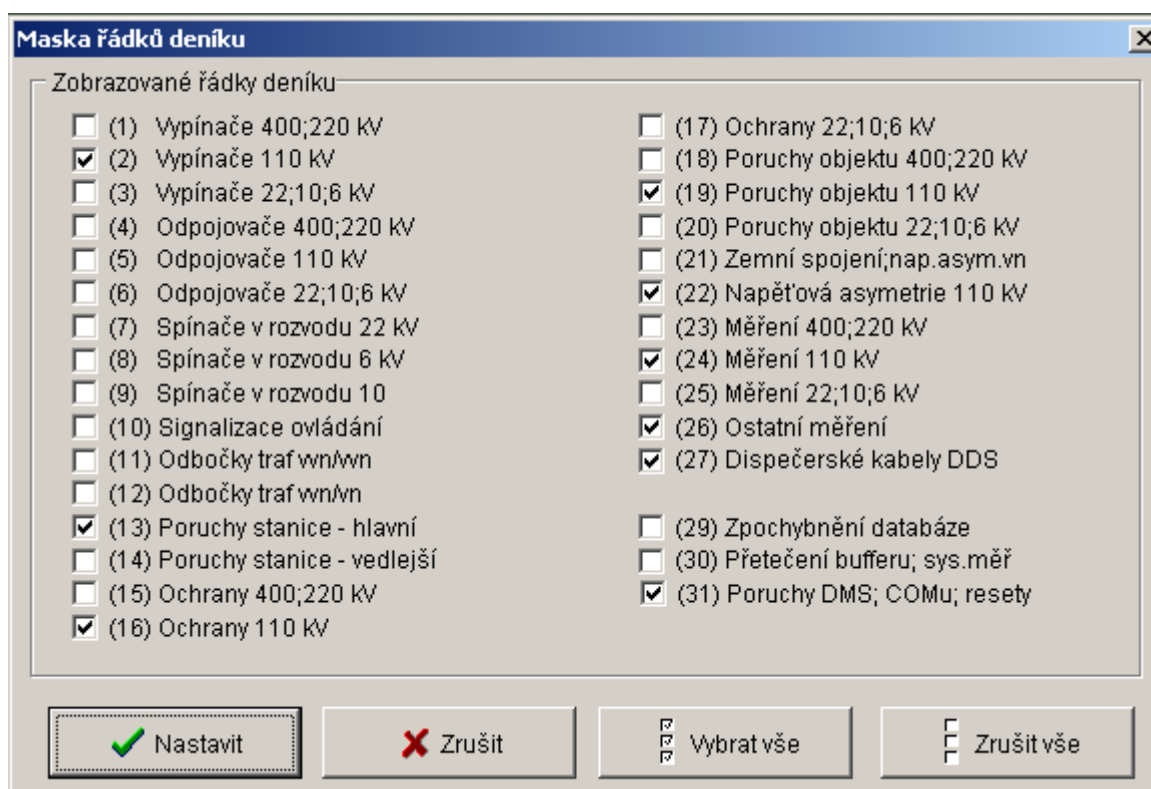


Fig. 13 Dialogue window for selection of the mask for the main diary screen

9.12.2 Groups of databases

The system administrator defines groups of databases, for example, according to the dispatcher workplaces. The maximum number of these groups in the system is ten. Using the following option the user with the respective rights (administrator) can select which databases are evaluated. Selected databases are used as the mask for the main diary and for the calculation of overall change calculations.

Movement in the window is enabled by mouse, by clicking on the respective selected field the database is cancelled or enabled. Selected items are marked in the menu by checking the field in the respective field. Typing is confirmed and terminated by clicking on the “Set” icon. The setting is permanent and is also valid after termination of the program. After typing the mask there is the automatic modification of the masks for the main diaries open on all running computers.

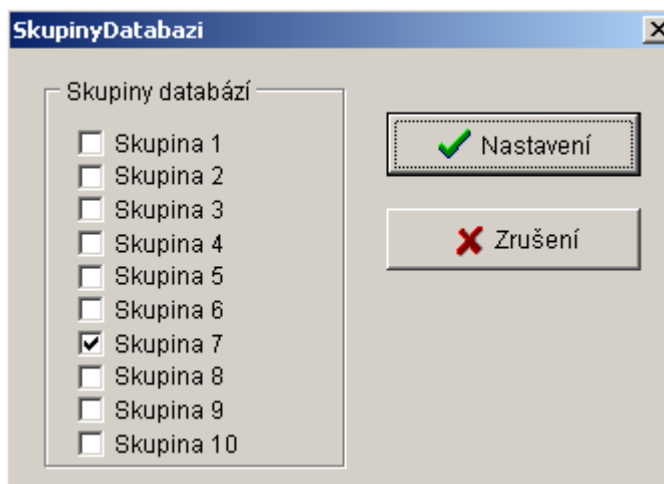


Fig. 14 Dialogue window for selection of the group of databases

9.12.3 Horn mask

This option is for when the communication computer runs under Windows NT. The item of the sub-menu “Mask for the horn” enables the user with the respective authority to select items in the main diary which can activate the horn. The movement in each window is the same as the movement in the window for selection of the mask for the main diary screen.

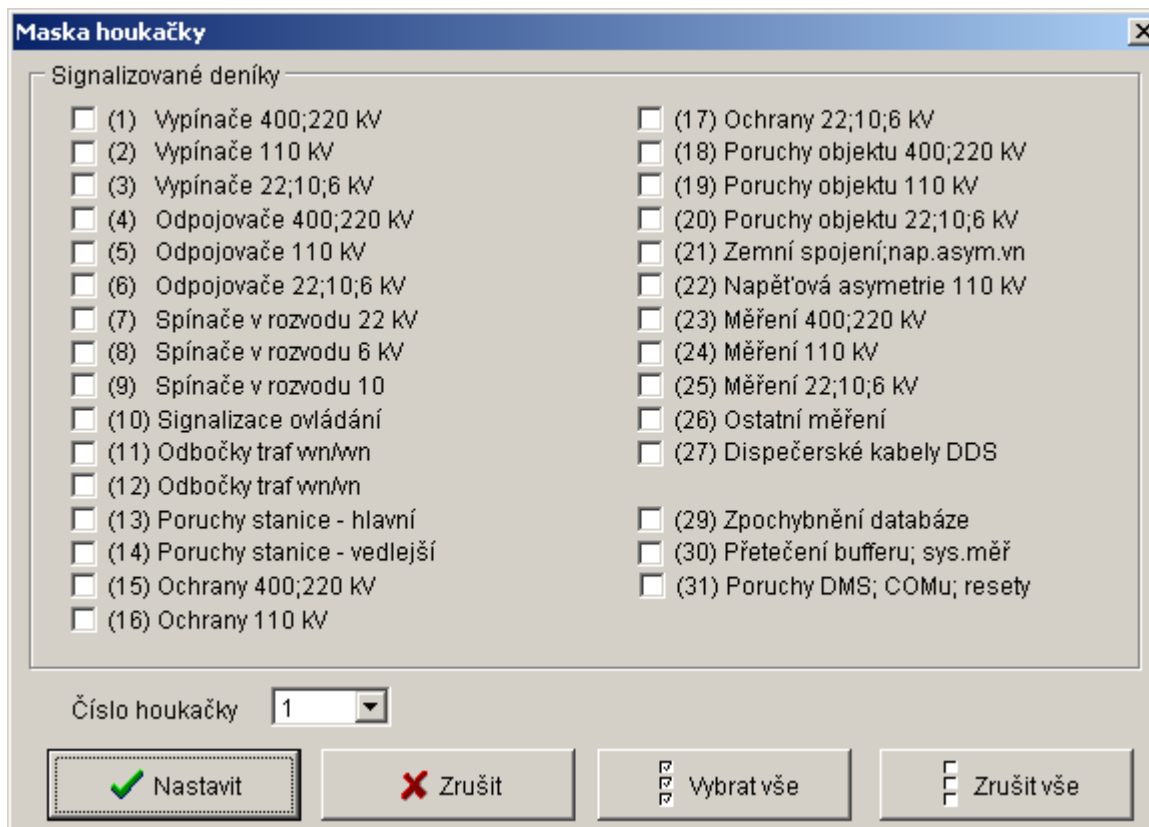


Fig. 15 Dialogue window for setting the mask for the horn.

Typing is confirmed and terminated by clicking on the “Set” icon. The setting is permanent and is also valid after termination of the program.

9.13 End

The function serves for termination of the program. The same effect is the combination of <Alt X>. Never end the program by resetting or disconnecting the PC. In the case that the application does not respond, press <Ctrl Alt Del> and terminate the application **WMDisp2.exe** in “Task manager”. For applications which use a local data server (workplaces for dispatchers) it is possible to terminate in the task manager the program **WMDServ2.exe**.

It is possible to reset or disconnect the supply to the computer only in the case where the computer does not respond for a long time or behaves incorrectly. It is necessary to record these failures and to notify them to the system administrator.

9.14 Sending SMS and e-mails

Dispatchers can use the SMS and e-mail functions for selected addresses. In the list of contacts there can be direct addresses to whom the message is sent by SMS and e-mail. In addition, it is possible to send a message to the group where the system will automatically ascertain sending to the respective members of the group.

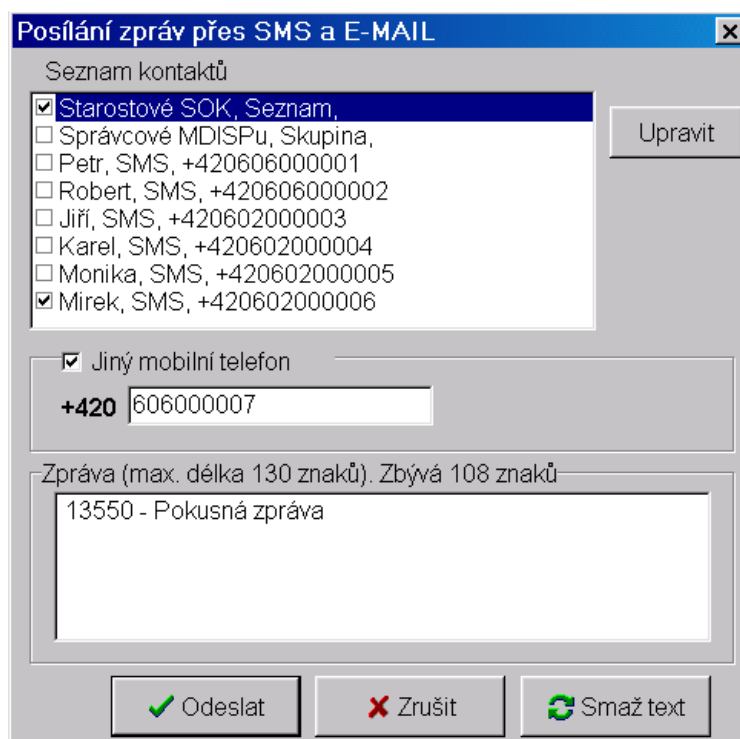


Fig. 16 Window for sending messages by SMS and e-mail.

After selection of the item from the “List” using the “Edit” button, it is possible to display the addresses and it is possible to type or enable them through the selection field.



Fig. 17 List of members of the group

9.15 Requirements for activities

This functionality serves for typing the requirements for modifications of diagrams, samples, sheets and other activities related to the MDISP system. Using the system it is possible to check the status of the processing of requirements, to approve and archive the confirmed changes.

The process for processing a request consists of the following activities:

- Typing of the request by the user.
- Checking of the request by the authorized person.
- Acceptance of the request by the system administrator.
- Actioning the requested modification by the administrator.
- Approval of the request by the user.

All typed requirements can be browsed in the table of requirements which can be opened in the menu “*Special/Table of requirements*”.

Řád.	Záznam	Datum zadání	Stav požadavku	Zadal	Značka	Obrázek	Požadavek
24	5138	27.1.2006 8:45:20	Čekání na převzetí	marecek	Ne	Ano	Prosím o zakreslení zrr
25	5139	27.1.2006 15:07:27	Čekání na schválení	wymetal	Ne	Ne	Prosím o změnu značky
26	5140	30.1.2006 7:25:41	Čekání na převzetí	fisarek	Ne	Ne	DTS10569.Oprava sch
27	5141	30.1.2006 10:01:19	Čekání na převzetí	havlik	Ne	Ne	Prosím o opravu zapoje

Fig. 18 Table of requirements

From this table it is possible to browse the status of the requirements, edit or type the requirements which are not related to the diagrams. For the display of the detailed status of the requirement, the Description button is used. The dialogue is displayed which is divided into individual parts which express the status of the processing.

Popis požadavku číslo 5140

Stav požadavku
Čakání na převzetí

Popis požadavku
Typ požadavku : Úprava schématu
Požadavek
DTS10569.Oprava schématu NN-dle obrázků-2ks-v
E-mailu.

Požadavek zadal : fisarek
Čas zadání : 30.1.2006 7:25:41.000
Přiřazeno k :

Prověření úpravy
Požadavek na prověření : Ne
Jméno prověřujícího :
Prověření zadáno :
Prověření provedeno :

Provedení požadavku
Předáno : 30.1.2006 7:25:41.000
Požadovaný termín : Co nejdříve
Převzal
Převzato :
Přislíbený termín :
Zpracoval :
Čas zpracování :
Archivace podkladů:

Schválení
Schválil :
Čas schválení :

Závěrečná poznámka

Zavřít

Prověření

Zrušení

Převzetí

Splnění

Schválení

Zamítnutí

Zobraz schéma

Zobraz obrázek

Zobraz značku

Fig. 19 Description of requirement

In the upper sub-window the actual status of the requirement is displayed. In the further part is the description of the requirement. It contains the text and the type of requirement, the name of the user who typed the requirement and the time of typing. The “Verification of editing” sub-window displays the course of verification, including the identification of the verifying person. The following part displays the status of processing the requirement by the system administrator and in the last part there is information about the approval of the modifications. On the right side of the dialogue are the buttons for confirmation of the individual steps. Only operations are permitted which can be performed at the respective time. If an image is attached to the requirement, it can be displayed with the button “Display image”.

9.15.1 Typing requirements

Requirements to diagrams can be typed by means of marks directly in the respective diagram. The other requirements are typed through the table with a list of all requirements. In the diagram an own mark is created in the common manner for the requirement. The text of the requirement can be typed directly into the mark.

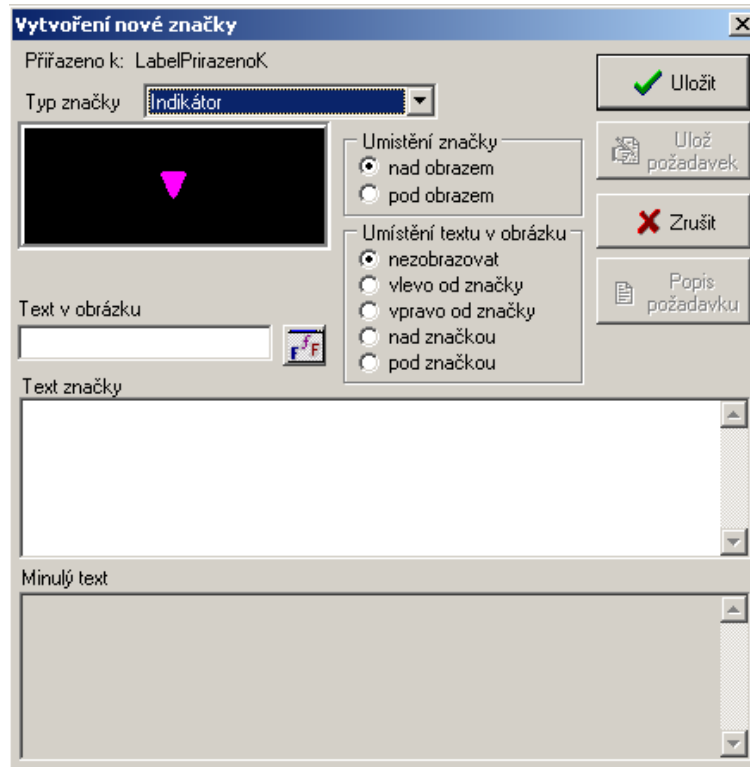


Fig. 20 Creation of a new mark

In the dialogue for the creation of the mark there is a button used where it is possible to create a requirement. For typing the requirement it is necessary to type the type of requirement which is selected from the offer; the text of a requirement should have a maximum length of 200 characters. When typing the requirement into the mark, part of the text is automatically copied into the dialogue where it can be edited. The dialogue has two variants. If the requirement is handed over for verification, it is specified in the dialogue to whom and when the verification is stated. If the requirement is directly handed over to the system administration, the required date of editing the requirement is typed. The date is typed by the level of importance or the specific requirement for the time when the editing is to be done. Both variants of the dialogue are stated in the following diagrams.

Fig. 21 Typing the requirement with verification

Fig. 22 Typing of the requirement with verification

Selected users may attach the diagram in BMP format to the requirement. The image is copied into the MDISP folder which is then archived together with the requirement.

If the requirement was typed from the mark, it is then possible to check in the mark its actual status by means of the “Description of requirement” button. The mark contained the requirement can only be cancelled by the system administrator.

9.15.2 Verification of requirement

The dialogue for verification has two variants. In the first variant the requirement was verified and then it was passed for execution by the system administrator. The time of verification and the required deadline for editing is typed. Moreover, it is possible to edit the text and to insert an image in the BMP format. The second variant serves for cancelling the requirement in the case that the verifying requirement was not confirmed. In this case a note justifying the cancellation of the requirement can be added.

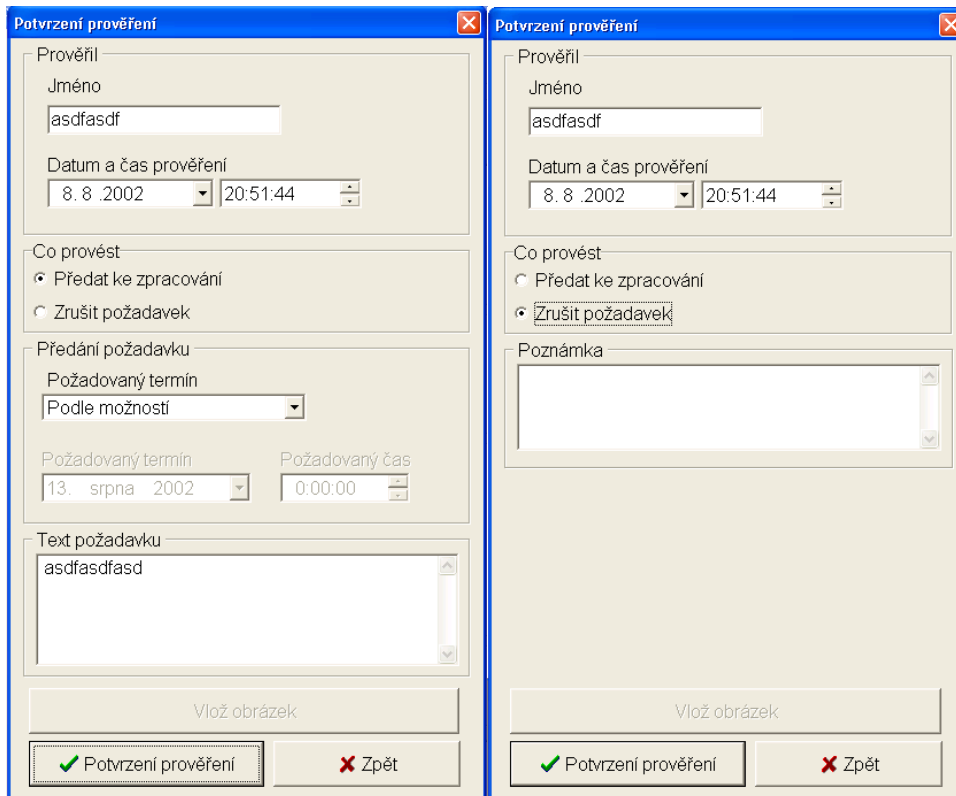


Fig. 23 Confirmation of verification of the requirement

At the time when the requirement is waiting to be taken by the administrator, the user may cancel the requirement.

9.15.3 Taking the requirement

The administrator will confirm taking the requirement with the proposed deadline for modification and may also add the image in MBP format in the following dialogue.

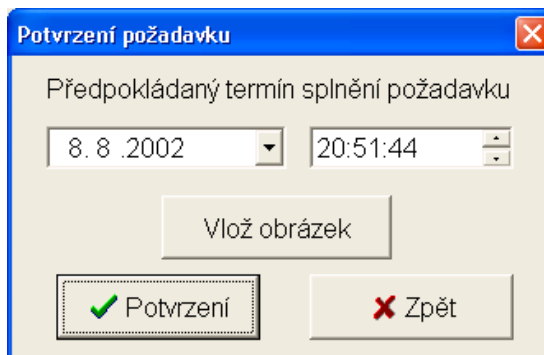


Fig. 24 Confirmation of requirement

9.15.4 Execution of required editing

The completion of the requirement is confirmed by the following dialogue in which, in addition, it is possible to add to the requirement an image in BMP format or to add a note.

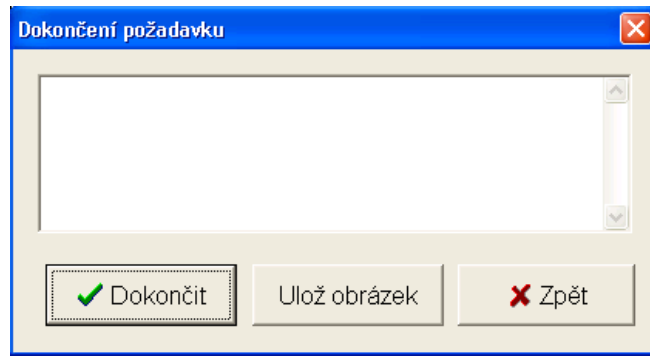


Fig. 25 Completion of requirement

9.15.5 Approval of requirement by the user

The user typing the requirement can approve or reject the execution. In this case a new requirement is automatically created and the old requirement will be marked as erroneously executed.

9.16 Display diagrams GIS – TIS

In the Mdisp system it is possible to display the diagrams from the GIS – TIS system. For displaying the diagrams the ActiveX component “LPVA” from the company Berit is integrated into the Mdisp display unit. The window with the diagram is opened through the diagram of the high-voltage networks where on the DTS object in the popup menu the option “Open TIS diagram” is active. After selection, the window is opened in which the searched for object is localized and there is the reading of selected GIS layers of the diagram which is loading. Data is loaded here from several sources. The initial database is TIS and further sources are ortophotomaps or the selected territory is selected and also further DGN and raster files which represent the individual layers of the diagram.

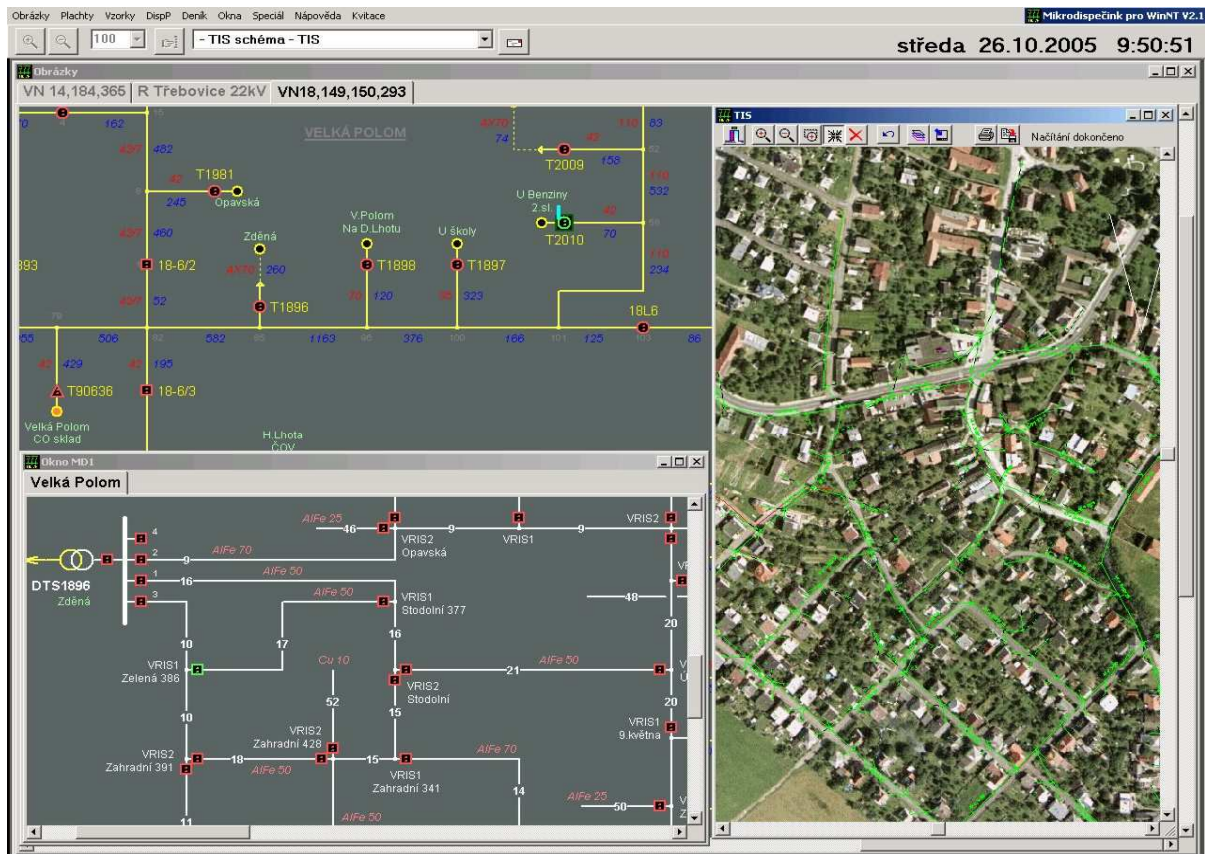


Fig. 26 The MD window with the diagram and map from TIS/GIS

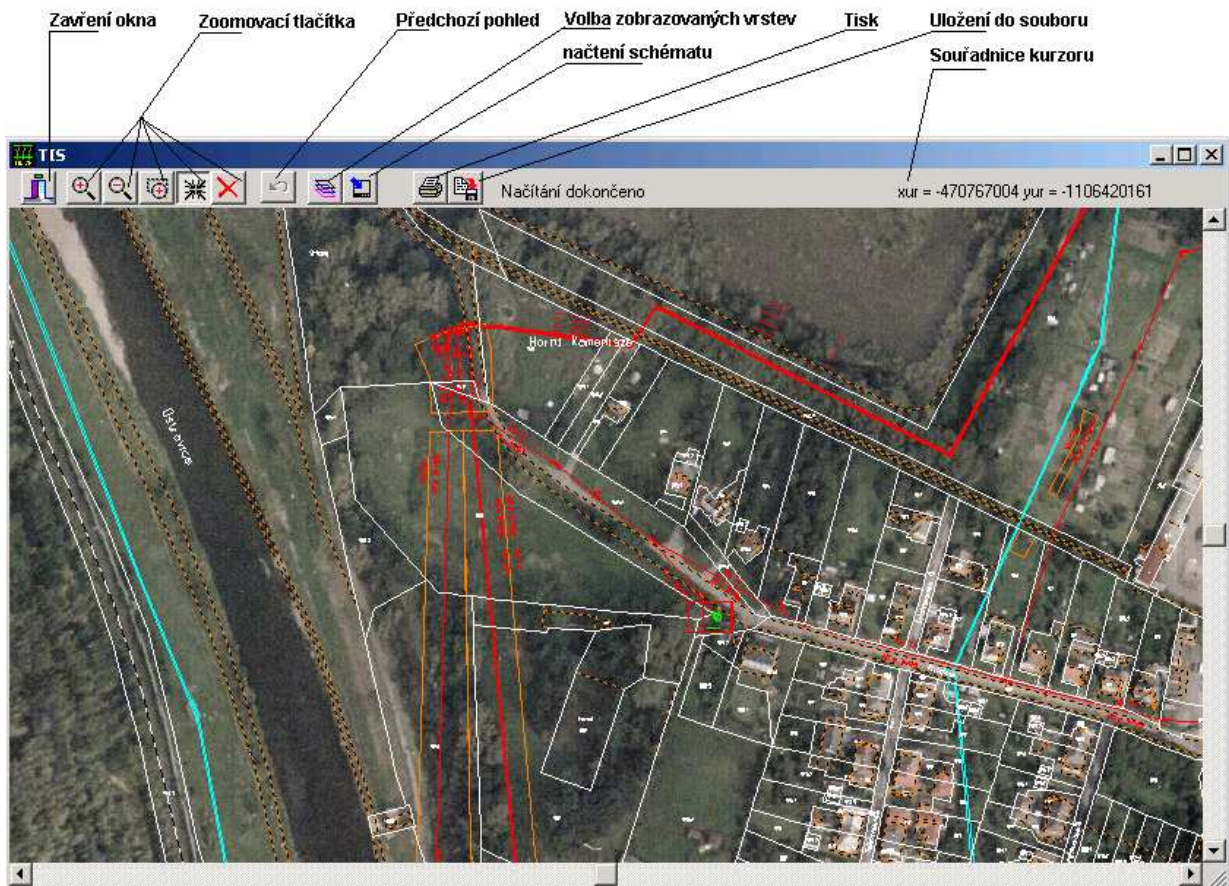


Fig. 27 Image loaded from TIS.

The loading of data is signalled by means of the “progress bar” which is only displayed during downloading. During downloading it is not possible to close the window.

The diagram is downloaded in such a manner that the selected object is in the middle of the object and the initial size of the surrounding is stated firmly by the program. The user may consequently zoom and move into other parts of the map in the diagram. The manner of the movement in the diagram depends on the regime in which it is located. The regime is signalled by the option of one of five zoom buttons on the upper bar of the window. Using the first two buttons, minimizing and maximizing is performed. Click with the mouse in the image to minimize and maximize with the firmly stated step in the place where the mouse clicking was performed and is displayed in the middle of the window. The further button selects the mode for the zoom option by means of the stated framed area. By selecting the mouse button and consequently dragging, the selected area is displayed. After releasing the mouse button the area optimally fills the window. The fourth button selects the mode for moving on the map. The image is not maximized or minimized but only the place on which the mouse was clicked is displayed in the middle of the window. The last fifth button cancels all previously described modes. To cancel, click with the right mouse button on the area of the window. Using the “Previous view” button it is returned to the previously selected resolution and the view.

When moving in the diagram, parts are displayed in which no data is loaded. The loading of data is always performed for the displayed section of the window due to the time demand and particularly due to the size of the volume of data. For loading the data after moving into another part of the map, the “Loading of the diagram” button can be used.

The dialogue for selecting the displayed layers is opened using the button “Selection of displayed lasers”.

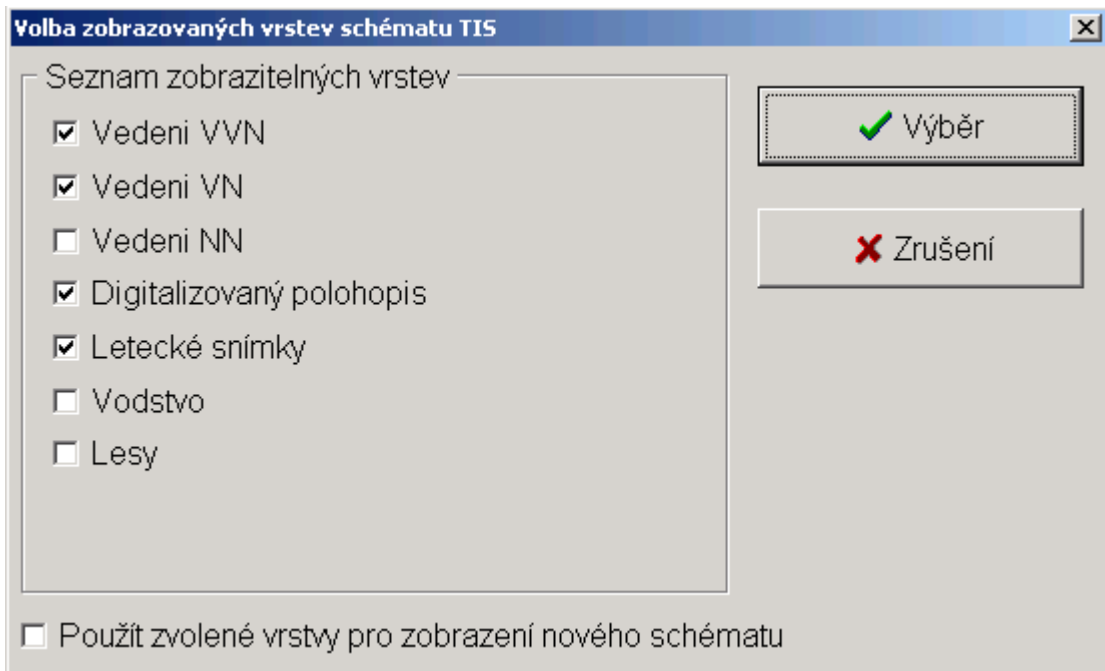


Fig. 28 Options for the displayed layers of the TIS diagram

During the change of displayed layers there is the automatic loading of data. Checking the lower option causes the newly opened window to open with the selected layers.

It is necessary to save the selected section into the BMP file by means of the button "Save into file". Printing of the displayed section is performed by means of the button "Print".