

# 7. DIARY

## Contents

<b>7. DIARY.....</b>	<b>64</b>
<b>CONTENTS.....</b>	<b>64</b>
<b>7.1 BROWSING DIARY .....</b>	<b>64</b>
<b>7.2 OTHER DIARY.....</b>	<b>69</b>
<b>7.3 SCREEN MASK .....</b>	<b>70</b>
<b>7.4 DATABASE MASKS .....</b>	<b>70</b>
<b>7.5 COLUMN MASKS.....</b>	<b>71</b>
<b>7.6 BLOCKING DBF .....</b>	<b>72</b>
<b>7.7 PRINT DIARY .....</b>	<b>73</b>

---

---

The menu contains options for opening the menu.

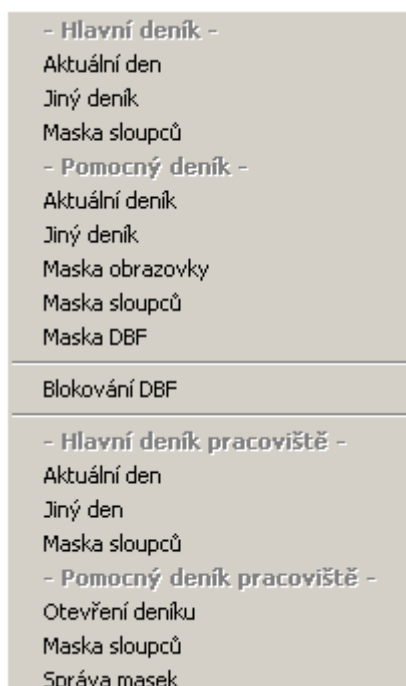


Fig. 1 Pull-down “Diary” menu

## 7.1 Browsing diary

On the screen it is possible to gradually open several diary windows and a diary for one day can be opened several times. To be able to open a diary for the same day with various masks, in the menu are the “Main diary” and “Auxiliary diary” groups. For each diary it is possible to set the masks of the columns and to open the required diaries for the actual or previous days. The main diary has the display mask set for the whole system and it can only be set by the system administrator. In the auxiliary diary each user can set the mask according to their requirements.

The list of items in the diary is also filtered by means of the database mask. In the main diary this mask is stated by the “group of databases”. In the auxiliary diary the user can select displayed databases individually.

After opening the diary a window is displayed in which it is possible to browse the diary for a selected day which has the following format.

Typing of operator for actual line

Change column mask

Change of the mask

Change of database mask

Go to beginning of diary

Go to a particular line in the diary

Go to end of the diary

Go to previous same item

Go to next same item

Go to previous item with the same object

Go to next item with the same object

Go to previous item with the same database

Go to next item with the same database

Increase resolution

Decrease resolution

Print

Help for actual line

Stop / run diary

Commentary to actual line

Inserted comment

Číslo	Datum	Čas změny	Čas reg.	Zdr.	Stanice	Objekt	Prvek	Stav	Kvitováno	Manipulant	Komentář
2436			10:12:55	5	Hořtice	110 V 687	P vývodu	OK1	-0.47	31.01.,10:25:51	
2437			10:12:55	5	Hořtice	110 V 682	P vývodu	OK1	-0.38	31.01.,10:25:51	
2440			10:12:56	5	Hořtice	110 V 682	Q vývodu	OK1	0.29	31.01.,10:25:51	
2441			10:12:56	5	Hořtice	110 V 688	Q vývodu	OK1	-0.38	31.01.,10:25:51	
2499	10:28:49,365		10:28:50	5	Hořtice	110 Rozvodna	U-nap. převodníků	vpořádku	!	31.01.,10:43:56	
2500	10:28:49,365		10:28:50	5	Hořtice	110 Skrin VM	U-nap. převodníků	vpořádku	!	31.01.,10:43:56	
2501	10:28:49,425		10:28:50	5	Hořtice	110 Skrin VM	vytažení jednotky	není	!	31.01.,10:43:58	
2506			10:28:52	5	Hořtice	110 V 683	Us vývodu	OK2	113.63	31.01.,10:43:58	
2507			10:28:52	5	Hořtice	110 V 687	Us vývodu	OK2	118.01	31.01.,10:43:59	
2508			10:28:52	5	Hořtice	110 V 682	Us vývodu	OK2	116.01	31.01.,10:44:01	
2509			10:28:52	5	Hořtice	110 V 688	Us vývodu	OK2	118.01	31.01.,10:44:01	

Fig. 2 Auxiliary diary in the stop status

Definition of individual columns in the diary:

- **Number** – sequence number of the item in the diary for the respective day.
- **Date** – date of the change of the signal in the station. If this date is not transferred from the station (the time of the change is not defined), then the date contains the day the change is made in the system; the date is not displayed if it is identical with the actual date of the diary.
- **Time of the change** - time (hour:min:sec,sec/100) changes in the station, i.e. the time transferred from the station. If this time is not displayed, the value is without the time.
- **Time reg.** - time (hour:min:sec) of the change in the displayed diary, or into the system (DP, PD).
- **Zdr.** - source of the change (number of the channel from which the change was made). If the number of the source is “0”, the value originated directly in the system.
- **Station** – name of the station.
- **Object** – name of the object (line,...).
- **Element** – name of the element (switch,...).
- **Status**- status (ON, OFF, failure, OK, ...) and the attribute or the value of measurement which caused the limit to be exceeded. Changes in normal statuses have the letter N instead of the

attribute. In the case of exceeding the limit, the following is displayed: **MH1** – for exceeding the upper limit I, **MD1** – for exceeding lower I, **OK1** – for return to the tolerance from the upper and lower limit I, **MH2** – for exceeding upper limit II, **MD2** – for exceeding lower limit II, **OK2** – for return to the tolerance from the upper or lower limit II.

- **Acknowledged** - date (day and month) and time (hour:min:sec) of the acknowledgement.
- **Operator** – name of the person who manipulated the power element.
- **Commentary** – any comment which can be written to any line of the diary

Displayed columns are stated by the column masks.

In the table is all data necessary for the identification of the change. The time of the change (distinguished to tens of seconds) is assigned to the change of the process variable (signal) in the computer system in the electric station. The changes in signals are written into the diary along with the exceeding of changes in measurement, failures in communication and changes of normal statuses. In the case of the traditional input of the change of the DMS type in the respective dispatch centre, only the change of the signal is transferred into the further dispatch centre without the time of origination (the time is not exact). This concerns direct inputs with the time, then the time of this change in the first dispatch centre is transferred with the change of status. Newly recorded values which are changed remotely and processing set for “0” or “2” are displayed in an inverse manner (not acknowledged).

Kvitování řádku	Ctrl+Enter
Help prvku na řádku	H
Ukaž objekt ve schématu	Ctrl+U
Další stejná databáze	Shift+V
Komentář řádku	K
Vložený komentář	Ctrl+K
Vložení manipulanta	M
Tisk	F9
Změna velikosti písma	Ctrl+P
Globální kvitování	
Maska sloupců	Ctrl+S
Maska obrazovky	Ctrl+O
Maska databází	Ctrl+D
Předchozí stejná položka	Z
Další stejná položka	V
Předchozí stejný objekt	Ctrl+Z
Další stejný objekt	Ctrl+V
Předchozí stejná databáze	Shift+Z
Další stejná databáze	Shift+V
Jdi na začátek	Ctrl+PgUp
Jdi na řádek	Ctrl+J
Jdi na konec	Ctrl+PgDn
Zavřít okno	
Vlastnosti okna	▶

Fig. 3 Menu of functions in the diary

Moving in the diary is done using the keys <Page Up>, <Page Down> and by means of arrows or by means of the mouse clicking on the respective line. If the line is not in the displayed part of the window, it can be reached by pressing (or clicking) the left mouse button on the icons for moving the image in the window – see the chapter “Windows”.

In the following text only pressing the keys for selection of the respective function are mentioned - however, it is necessary to point out that it is possible to call up many functions by clicking on the respective icon on the upper bar in the diary (see Fig. 2), or from the menu displayed after clicking with the right mouse button in the diary (see fig. 3).

It is possible to change the size of the font by pressing <Ctrl P>, the font is changed to large, if the maximum size of the font is achieved, it is changed to small; a total of 7 steps for setting the size of the font are available. It is possible to change the size of the font by means of the icons **Increase resolution** and **Decrease resolution** in the upper bar; the font is either increased or decreased according to the selected icon and in this manner a total of 11 steps for setting the font are available.

It is possible to go to the beginning of the diary using the buttons <Ctrl Page Up>. The end of the diary is achieved by means of <Ctrl Page Down>. It is possible to go to the actual line by <Ctrl J> and typing the number of the line. If the required lines do not correspond to the display mask, then the first previous displayable line is displayed. When browsing the diary for an actual day the window is switched into browsing mode – this mode is signalled in the header of a separate window or in the name of the actual tab in the window of tabs (terms such as independent window, tab window, tab, tab name, are explained in the chapter “Windows”). In this mode there is no updating of items if in this status new items are added, the message “New items” is displayed on a yellow background in the bar of the diary on the right from the icons. It is possible to terminate this mode by going to the end of the diary <Ctrl Page Down> or by switching to another window. If no manipulation is performed in the diary, after 60 seconds the diary will terminate the browsing mode and move to the end of the actual diary. The diaries from the last days are permanently checked in browsing mode for the changes of acknowledgement of the displayed lines. It is possible to display help for the element in any line of the diary which is displayed on it. This can be performed with key <H>.

When browsing the diary it is possible to change the masks for the columns of the diary. The function is called up by means of the raster menu “Diary” or by the key <Ctrl S>. The menu for selection of the mask is displayed and after selection the diary is displayed with a new mask. In the auxiliary diary it is possible to change the mask for display with key <Ctrl O> and the mask for the database with key <Ctrl D> or by means of the “Diary” pull-down menu. The menu for selection of the mask will appear and the diary is then displayed with the newly set mask. The change of masks called up by pressing the mentioned keys or selecting from the menu after clicking with the right mouse button in the diary is performed only in the actual diary. However, if the change in any of the masks is called up from the pull-down menu, after selection of the mask the dialogue window is displayed with the question “Do you want to set a new mask in the already opened diaries?”. - therefore, the change is performed either by opening all of the opened diaries of the respective type (main, auxiliary) or in none of the opened diaries of the respective types – i.e. the mask will remain as the default for the newly opened diary and this setting is permanent and is also valid after termination of the program.

**Acknowledgement of items** is with the key <Enter> by clicking with the mouse and the cursor must be over the respective item. After first pressing, the acknowledged line is in light grey colour and in the acknowledged column the date and time of the acknowledgement will appear. If the same line is acknowledged once again, it will appear in yellow. This and the further acknowledgement does not influence the acknowledged column. Any further acknowledgement is in grey. The distinguishing of the line to a yellow and light grey colour is due to the transfer of service. The line indicated in yellow will be able to be copied according to the setting during the transfer of service.

The name of the operator can be added to each item in the diary. The typing is called up by means of the key <J> on the requested line. Afterwards, the dialogue is called up in which the requested name is typed. In the settings menu the most recently typed name is displayed. If suitable, it is sufficient to confirm, otherwise type a new password so the old password is automatically cancelled. The system keeps a summary of the names of the last 100 operators who were used in the system. If during the typing a name is found which is identical with the already written characters, this name is offered. If you continue typing, the offer is cancelled. If the proposed name is suitable, it can be confirmed by the key <Enter>.

A **comment** can be made for each item in the diary (line). This function can be called up from menu displayed after clicking with the right mouse button on this line or pressing the button <K>, and the cursor must be on the respective item (line) of the diary. The window appears in which it is possible to edit the text. The window is terminated without saving the changes by pressing the button <Esc>, clicking with the mouse button on the respective icon in the header of the window or on the button “Cancel”. The previously typed comment which is displayed in a grey colour can only be edited by the system administrator. In the diary the time of the creation of the comment is displayed and the part of the first line of the comment. After further pressing <K> or calling up the function, it is possible to add a further comment. The scope of the comment is practically unrestricted (max. 60,000 characters). The text is edited using the keyboard, using the mouse it is possible to work with marked text. The text is marked by pressing and holding the left mouse button and dragging through the text which is to be selected – the text is highlighted in blue for the standard set Windows

colour pattern. Then by clicking with the right mouse button and selecting the required function it is possible to copy (saving into the clipboard) or delete the selected text. Text from the clipboard can be called up again in the place of the cursor by clicking on the right mouse button and selecting the item *Insert*. By clicking on the “Save” button the changes are saved and, at the same time, the editing window is closed. The text saved in the clipboard can also be called up, e.g. by editing the text of another comment, etc., or in other text editor working in Windows.

At the end of the diary for an the actual day (after the last line of the change) **it is possible to add the inserted commentary**. The function is called up by the combination <Ctrl K>. After the confirmation of the request the window appears and it waits for the confirmation of the line at the end of the actual diary. After inserting the text for the “inserted comment” at the end of the diary for the actual day, the window of the editor will open in which it is possible to edit along with the above-mentioned description in the comment on the line.

In the diary is a simple **search function**. In the diary it is possible to search the same **item** (station, object and element), of the same **object** (station and object) of the same **database** (name of the station). The same item is searched in an upward direction by pressing the key <Z>, in the downward direction by pressing the key <V>. The same object is searched in the upward direction by pressing the key <Ctrl Z>, in the downward direction by pressing the key <Ctrl V>. The same database is searched in the upward direction by pressing the key <Shift Z>, in the downward direction by pressing the key <Shift V>. If the item is found fulfilling the set conditions (according to searching and fulfilling the display mask), then the searching is interrupted and the cursor is placed on this item.

If we want to stop the diary permanently, click on the icon **Stop the diary** in the upper bar; this status is again signalled in the header to the window with the text. The transfer into the normal regime is possible only by clicking on the icon **Start the diary** (the same icon with the text changed). It is not possible to call up the change of the mode by a key shortcut or selection from the menu.

## 7.2 Other diary

After selecting “Other diary” the dialogue window is displayed for typing the date.

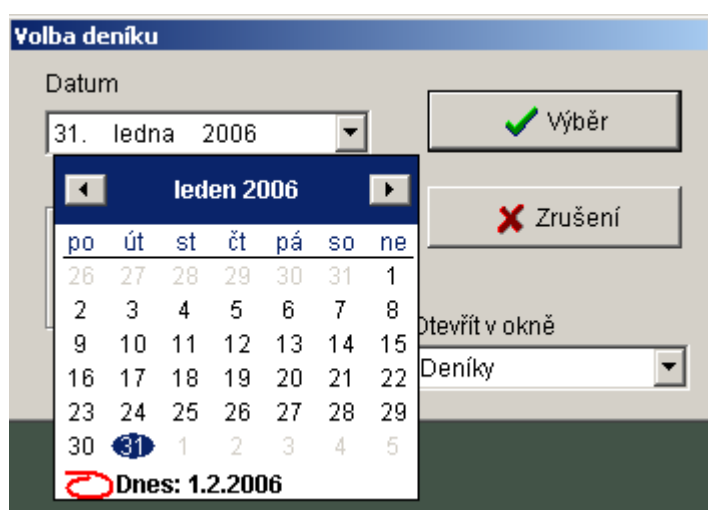


Fig. 4 Dialogue window for typing the date

When opening the dialogue window the default date is the date of the previous day. By clicking on the “Selection” icon the selected date is confirmed and the diary from this day is displayed. If the diary from the stated day does not exist, the window is displayed (see Fig. 5). The window is displayed by clicking on the “Cancel” icon, and also by pressing the key <Esc> or <Enter>.

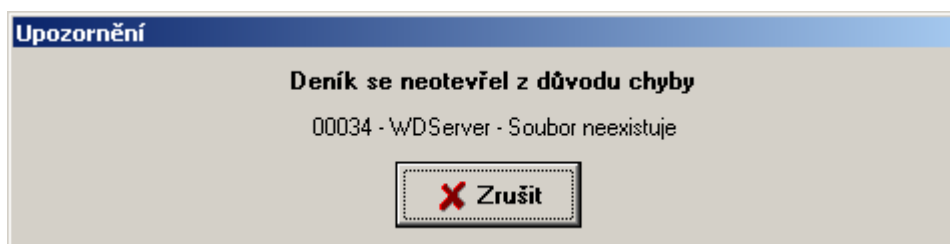


Fig. 5 Window with error message

## 7.3 Screen mask

This function enables the user to filter the list of items for the diary. Each diary has a mask. The mask for the main diary can only be set by the system administrator. Setting the mask for the auxiliary diary is enabled for each user for whom the display of the diary is permitted. It is used to increase easy orientation in the diary and some changes can be suppressed. The movement in the window is enabled by mouse; by clicking on the respective select field the mask of the listing is cancelled or enabled. A further option is the use of cursor keys; using the space the mask for selection is cancelled or enabled. Selected items are marked in the menu by checking the respective field. At the same time it is possible to select any items from the back of the diary. For faster selection of all items it is possible to use the icon “Select all” or, on the contrary for removing selection of all items, the icon “Unselect all”. Selected items are reflected according to the setting by recording into the window of the diary. The beeping of the PC is set only by the main diary mask. By clicking on the “Set” icon this setting is permanent and is also valid after termination of the program.

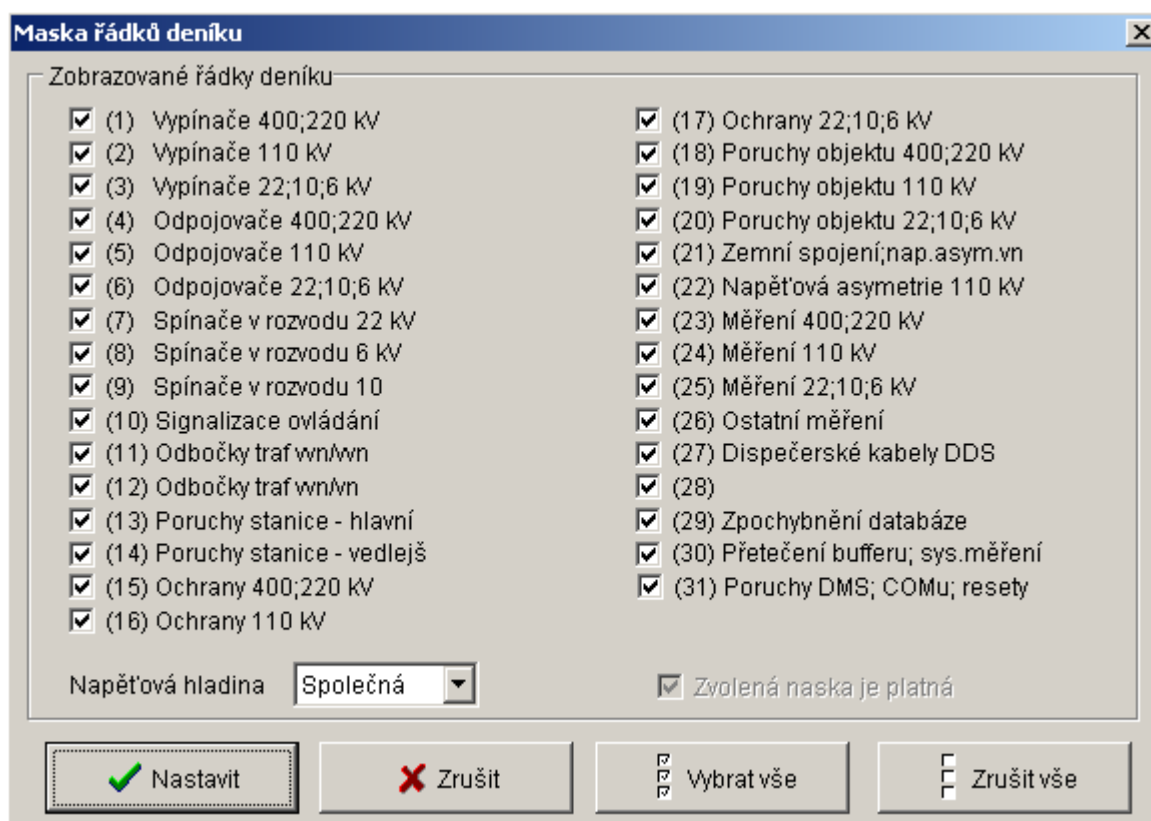


Fig. 6 Dialogue window for selection of the mask for the auxiliary diary screen

## 7.4 Database masks

This function enables the user to set the list of databases which will be displayed in the auxiliary diary. This mask is not valid for the main diary where the list of databases is stated by the “Groups of databases”.

After selection, two lists are displayed within one window in which there are the names of the databases used by the system. In the left list are the databases which are displayed in the list; in the right list are the blocked databases. The list of blocked databases is backlit in red. Movement in the database from one list into the second is performed by clicking with the mouse on the respective name of the database (the name of the database for the standard set Windows colour scheme will be backlit in blue) and then by clicking on the icon for clicking or enabling selected database. The same effect can be achieved by double clicking with the left mouse button on this name of the database. Switching between lists is performed by clicking with the mouse. The movement of all databases from one list into the second list is performed by means of icons for

blocking or enabling all databases. The typing is confirmed and terminated by clicking on the “Set” icon. The setting is permanent and is also valid after termination of the program.

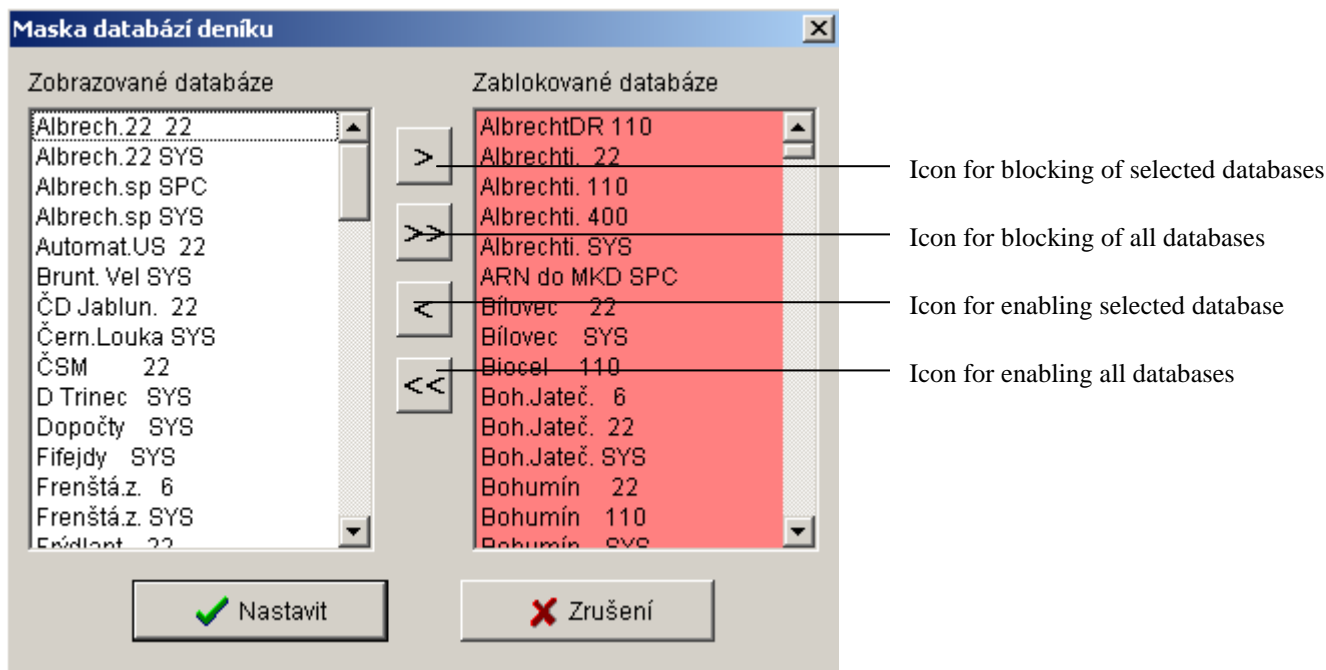


Fig. 7 Dialogue window for selection of the database masks

## 7.5 Column masks

The column masks enable the user to suppress the list of some columns in the diary and to modify the diary as a whole. Each diary (main and auxiliary) has its column masks. The movement in the window is enabled by mouse, by clicking on the respective field the column mask is cancelled or enabled. A further option is the use of cursor keys; using the space the column mask is cancelled or enabled. Selected columns are marked in the menu by checking the respective field. Selection of all columns is performed by clicking on the “Select all” icon. The typing is confirmed and terminated by clicking on the “Set” icon. Selection is valid only up to the termination of the program, however, if you want a new setting to also be valid after the termination of the program, it is necessary before clicking on the icon “Set” to check the “Save setting” field in the right lower edge of this window.

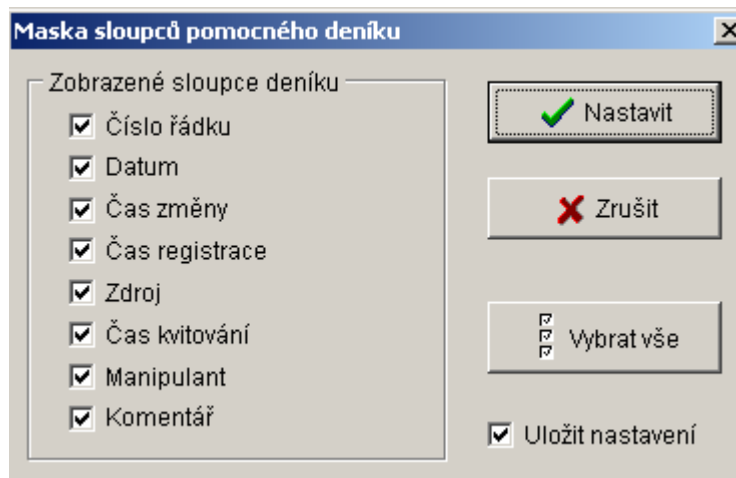


Fig. 8 Dialogue window for selection of the column masks



## 7.6 Blocking DBF

This function serves for selecting databases or one object in a database where the changes will not be recorded into the diary. In one database it is possible to block further objects It is possible to block a maximum of values in 20 databases. This function can be used during errors and servicing equipment.

After selection, two lists are displayed within one window in which there are the names of the databases used by the system. In the left list the databases are displayed whose recording is not blocked. In the second list backlit in red are the blocked databases or their parts (after the dash there is the name of the blocked object in the respective database). Movement in the database from one list into the second is performed by clicking with the mouse on the respective name of the database (the name of the database for the standard set Windows colour scheme will be backlit in blue) and then by clicking on the icon for clicking or enabling selected database. The same effect can be achieved by double clicking with the left mouse button on this name of the database. If you want to block only one object in the database, after its selection in left list of enabled databases click on the icon “Block object” and the offered window will display the list of all objects in the database (see Fig. 9). Select this object with the mouse and confirm by clicking on the “Select” icon. Switching between lists is performed by clicking with the mouse. The typing is confirmed and terminated by clicking on the “Set” icon. The setting is permanent and is also valid after termination of the program. The enabling of all blocked databases is performed by clicking on the icon “Confirm”,

Databases which are blocked are tested every 15 minutes. In the case that the function is permitted for use and some database or its part is blocked, the yellow text “Blocked databases” is displayed on the red background in the upper bar on the right from the pull-down list of opened windows and are displayed on the screen - however, this display must be enabled for this used by the system administrator. The window is displayed by clicking on the “Close window” icon, and also by pressing the key <Esc> or <Enter>.

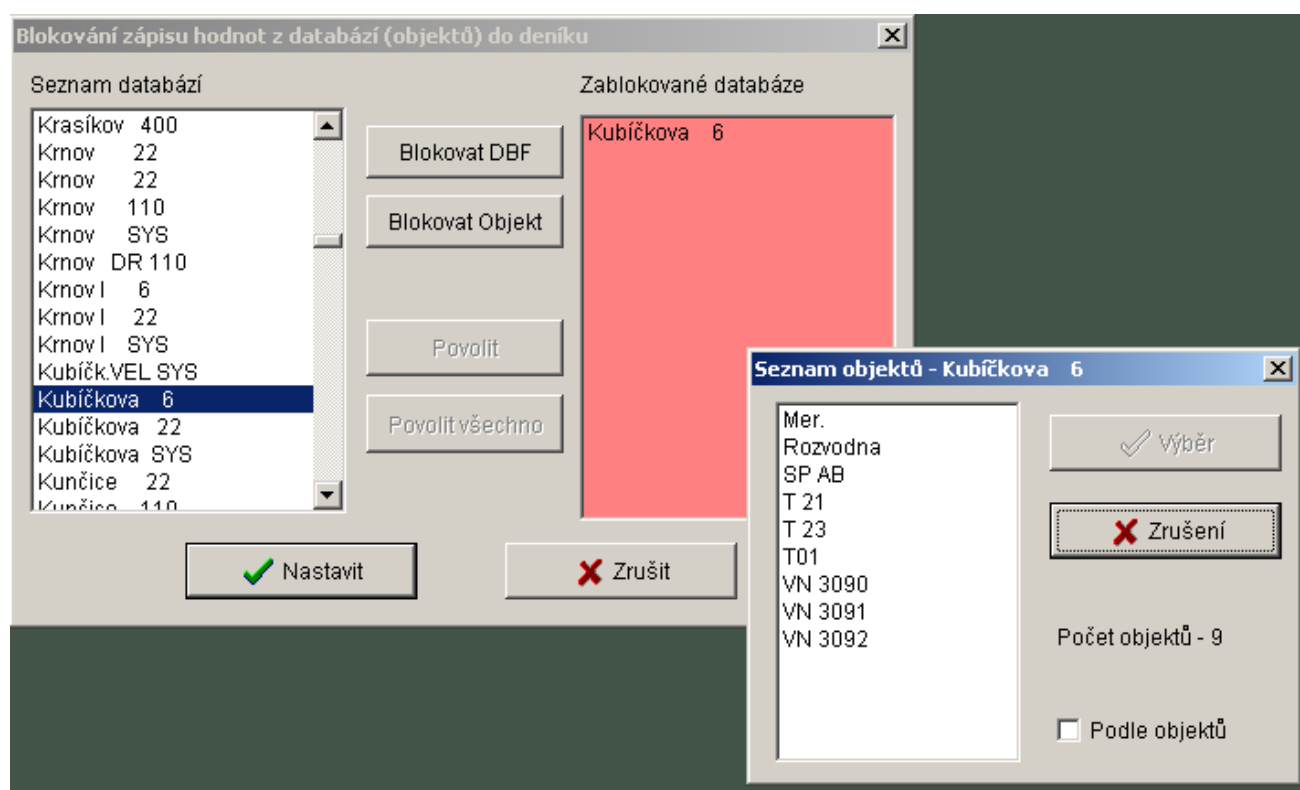


Fig. 9 Blocking databases

## 7.7 Print diary

Select the item **Print**, after clicking with the right mouse button anywhere in the diary to open the “Print diary” window stated for parameterisation. This can also be implemented by clicking with the mouse on the “Print” icon in the diary or by moving the mouse to the “Special” item in the main menu and in the pull-down sub-menu by clicking with the mouse and selecting the item **Print** or pressing the key <F9>.

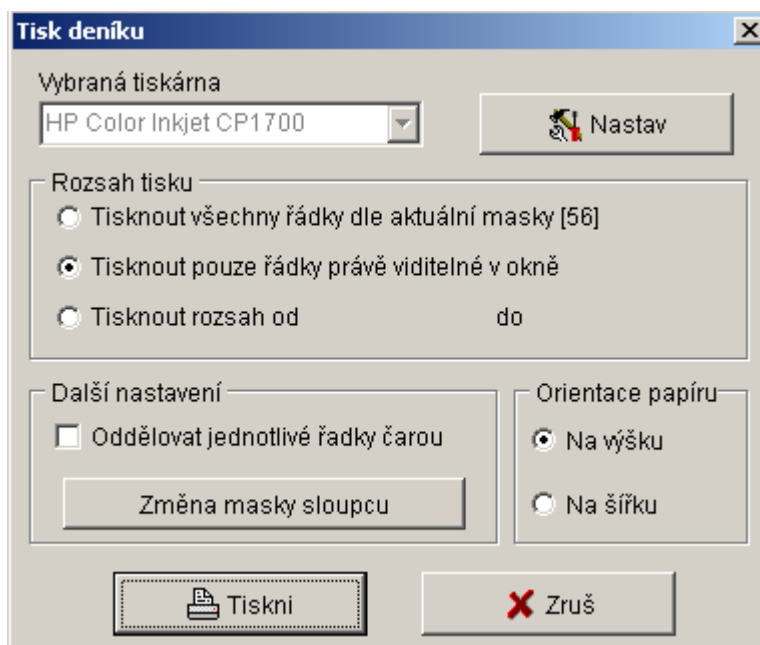


Fig. 10 Parameterisation window for printing the diary.

In the parameterisation window “Print diary” it is possible to select the printer and its setting, including orientation of printing, scope of printing, separation of lines by the line and changing the mask of the printing columns. Printing is started by clicking on the button “Print”.