

5. SAMPLES

Content

5. SAMPLES	52
CONTENT	52
5.1 SAMPLES	52
5.1.1 INCREASE AND DECREASE OF RESOLUTION	54
5.1.2 PRINT GRAPH.....	54
5.1.3 ADD VALUES TO THE GRAPH.....	55
5.1.4 REMOVE VALUE FROM THE GRAPH	55
5.1.5 SETTING THE RANGE OF VALUES	56
5.1.6 SETTING GRAPH TO THE STATED TIME	56
5.1.7 SETTING THE VERTICAL AND HORIZONTAL GRIDS.....	56
5.1.8 SETTING THE COLOUR OF THE GRID, BACKGROUND COLOUR OF THE CURVE, BACKGROUND COLOUR OF THE GRAPH, BACKGROUND COLOUR OF THE GRAPH PANEL	56
5.1.9 DETAILED DISPLAY, DISPLAY 15 MINUTES, DISPLAY 1 HOUR, DISPLAY 8 HOURS, DISPLAY 1 DAY, DISPLAY 7 DAYS, DISPLAY 1 MONTH	57

This function of the main menu has several options: “Station”(there are sub-stations in the respective field (sum of transformers....) and this is also divided according to individual areas (DP Frýdek-Místek, DP Hodolany, DP Krnov, DP Nový Jičín, DP Ostrava and DP Ráječek).

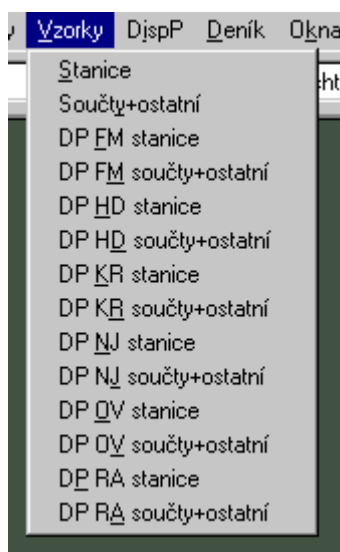


Fig. 1 Pull-down “Samples” menu

5.1 Samples

For all options (Stations, Sums + other, DP FM stations, DP FM sums + other, DP HD stations, DP HD sums + other, DP KR stations, DP KR sums + other, DP NJ stations, DP NJ sums + other, DP OV stations, DP OV sums + other, DP RA stations, DP RA sums + other) menu the activity will be the same; it will only differ with the selection of possible measurements for displaying in the graph.

After this selection the window with the menu of the existing samples is displayed (it is possible to sort alphabetically) with the range of the display by date.

The samples are the actual values of measurement read each *15 seconds*. Sampling is changing and all values are sampled.

In one graph up to 5 values (courses) can be displayed. The line graph is used for the display where in the vertical axis there is the value of the monitored value and on the horizontal axis is the time. Each displayed value has a vertical axis on which the scale is displayed. Each vertical axis is displayed in a colour which corresponds to the colour of the graph and the colour of the description of the value under the graph.

It is possible to read the graph values using the cursor (the values are displayed in the black window in the lower part of the image – Fig. 3 Samples) or by indicating with the mouse on the respective part of the curve (where it is necessary to leave the mouse inactive for one second) and beside the mouse cursor the window with the name of the curve, unit and value is displayed.

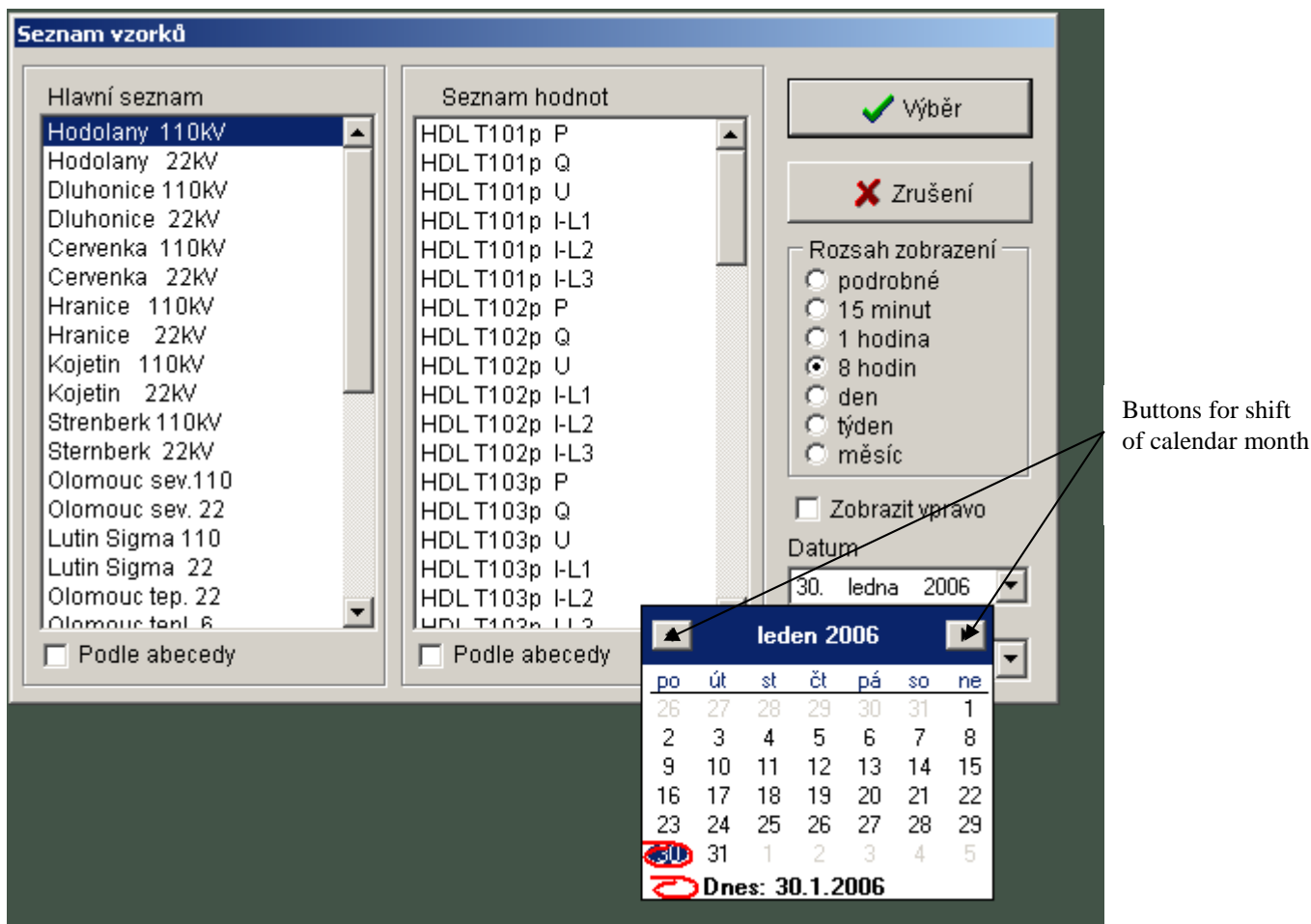


Fig. 2 Selection of samples

After the selection the respective samples are displayed in graphic form. The environment is represented by the bar of functional buttons and the graph.

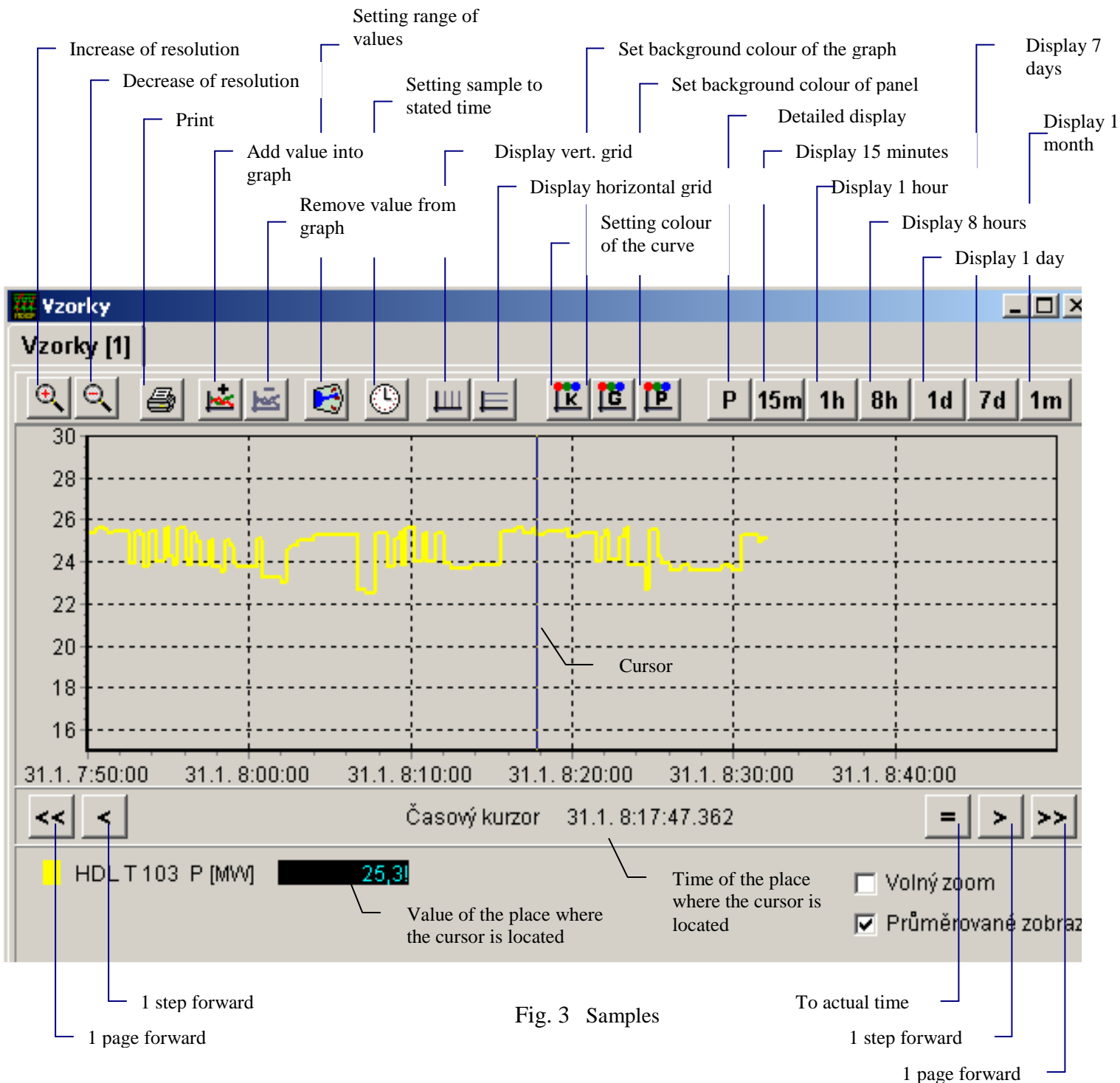


Fig. 3 Samples

5.1.1 Increase and decrease of resolution

The change of the size of the font is performed in firmly set steps.

5.1.2 Print graph

In the "Preview for printing the sheet" window the orientation of the paper (portrait or landscape), the size of the individual margins in % and printing of more or less details can be selected. It is possible to print using the printers installed in the Windows operating systems. After pressing the "Setting the printer" button, the standard setting for the dialogue of the selected printer is displayed in the respective operating system and it is possible to set, among other parameters, the size and the quality of the printing. After completion of this parameterisation, the printing is confirmed by clicking on the button "Print".

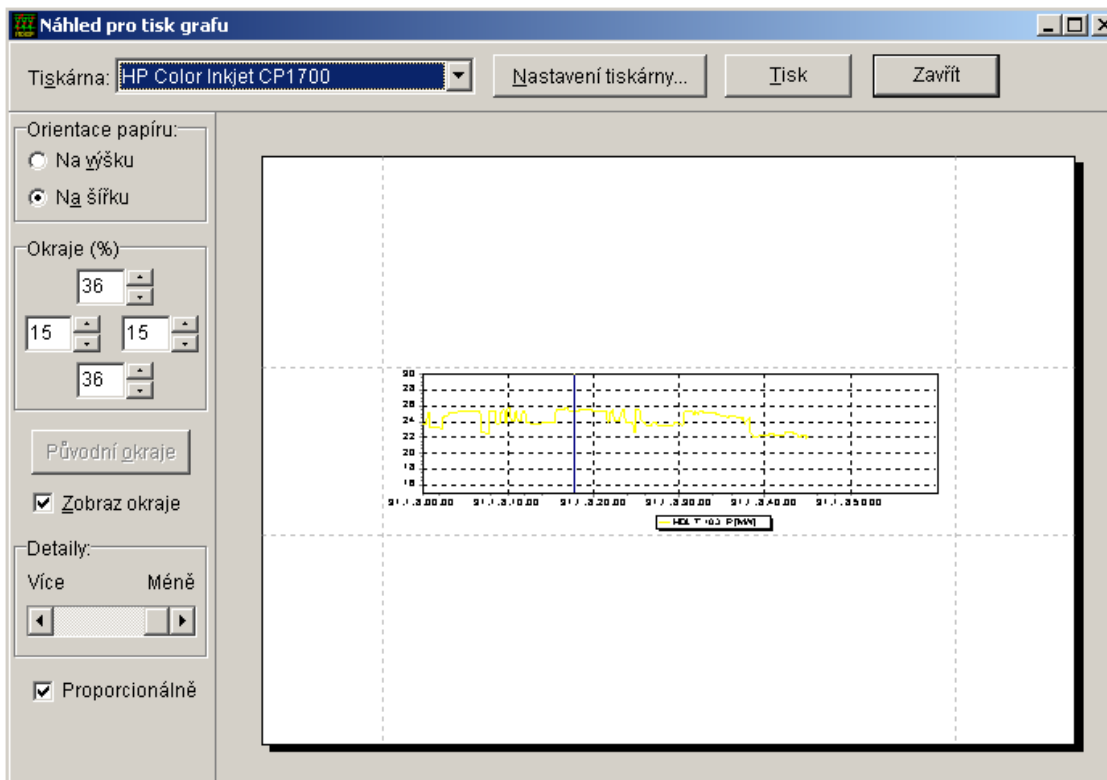


Fig. 4 Window for graph printing

5.1.3 Add values to the graph

The same window is displayed as during the first selection of the samples, the type of displayed value and the date (Fig. 2 Selection of samples).

5.1.4 Remove value from the graph

Option to exclude any value from the graph

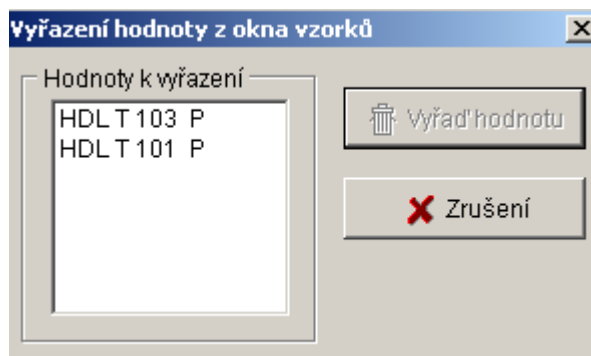


Fig. 5 Remove value from the graph

5.1.5 Setting the range of values

Option to set the upper and lower range of values within –9999 to 9999.

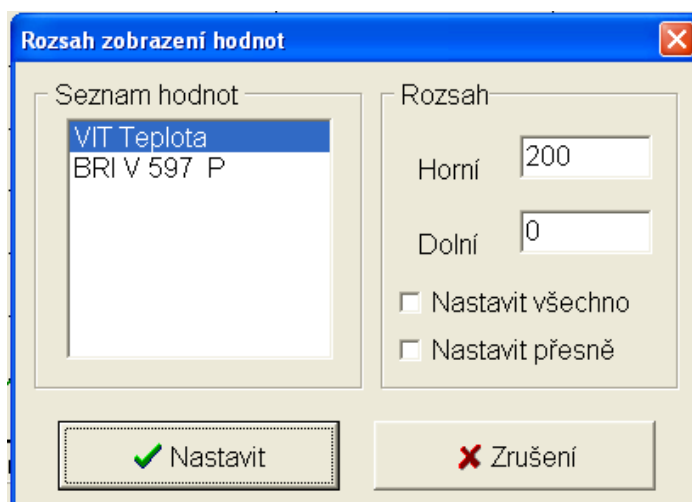


Fig. 6 Setting range of values

5.1.6 Setting graph to the stated time

Option to set the cursor for the date and exact time.

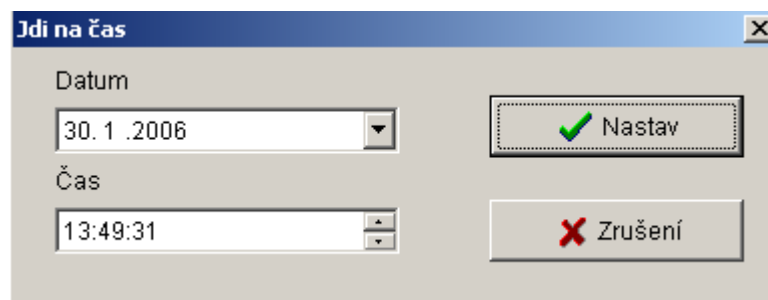


Fig. 7 Setting the graph to the stated time

5.1.7 Setting the vertical and horizontal grids

Option to set the display of the vertical and horizontal grids.

5.1.8 Setting the colour of the grid, background colour of the curve, background colour of the graph, background colour of the graph panel

Option for the user to set the colours according to their requirements.

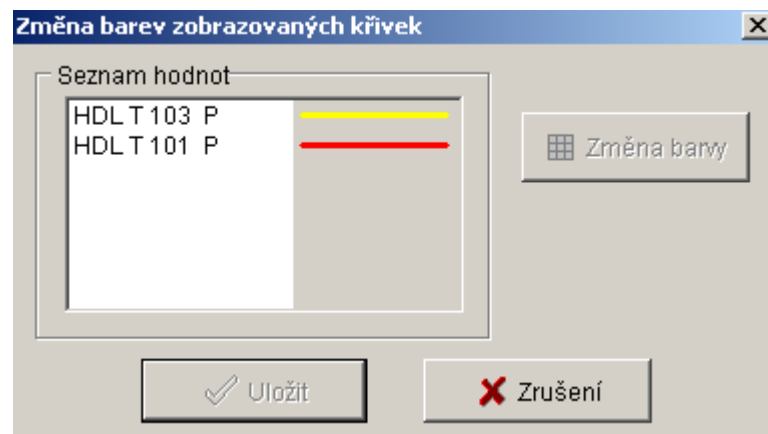


Fig. 1 Setting colour of the grid

5.1.9 Detailed display, Display 15 minutes, Display 1 hour, Display 8 hours, Display 1 day, Display 7 days, Display 1 month

The user selects the time range of displayed values – from 15 minutes up to 1 month. If in the window more values are displayed, such values will be selected whose range will be changed. All these functionalities are also in the menu which is called up by clicking with the right mouse button on the sheet.